



G A M I N G C A S E

2024

contents

Innovative Case

CAST	04
CUBE	06
CUBE MINI	08
OVERDRIVE	10
OPUS	12
PYRAMID	14
PYRAMID L	16
PYRAMID V	18
PYRAMID MESH	20
PYRAMID MINI	22
REGIS	26
SANCTUM	28
MESA	30

Full Tower

AUGMENT	32
STORM 6000-ARGB	34
ZIRCON	36

Mid Tower

GUARDIAN GLASS	38
APOLLO	40
AERO	42
CELESTA	44

ECLIPSE	46
HIVE	48
HIVE M	50
INFERNO 310 DF	52
IRIS	54
OCTANE A	56
PRIME	58
SPECTRA B/ W	60
ZENO	62
NEO	64
CHROMA A	66
CHROMAB	68

Micro ATX

ELISE	70
ELISE M	72
NOIR	74
LUMINOUS	76
XANDER	78

Power Supply

AZZA 550W 80+ Bronze	80
Power Supply	
AZZA 650W 80+ Bronze	81
Power Supply	
AZZA 650W ARGB 80+ Bronze	82
Power Supply	
AZZA 750W 80+ Bronze	83
Power Supply	
AZZA 750W ARGB 80+ Bronze	84
Power Supply	
AZZA 750W 80+ Gold Power Supply	85
AZZA 850W 80+ Gold Power Supply	86
PSAZ-750G Gen5,80+ Gold	87
Power Supply	
PSAZ-850G Gen5,80+ Gold	88
Power Supply	
PSAZ-1000P, Gen 5,80+ Platinum	89
Power Supply	

Fan

HURRICANE II	90
HURRICANE III	91
HURRICANE III	92
(HUB included)	
PRO FAN	93

GALAXY (STANDARD FAN BLADE)	94
GALAXY (REVERSE FAN BLADE)	96

Liquid Coolers

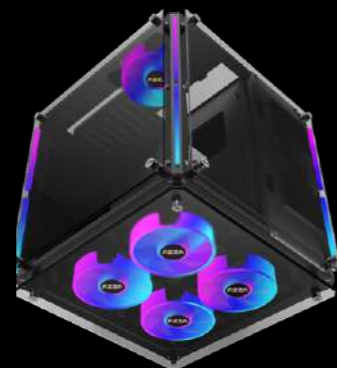
BLIZZARD 120	98
BLIZZARD 240	100
BLIZZARD 360	102
BLIZZARD SP 240	104
BLIZZARD SP 360	106
GALEFORCE 120	108
GALEFORCE 240	110
GALEFORCE 360	112
AZZA BLIZZARD PRO 240	114
AZZA BLIZZARD PRO 360	116
AZZA CUBE 240	118
AZZA CUBE 360	120
Hex 240	122
Hex 360	124
Pyramid 240	126
Pyramid 360	128

Accessories

RGB PCI-E CABLE	130
SLEEVED CABLES	132



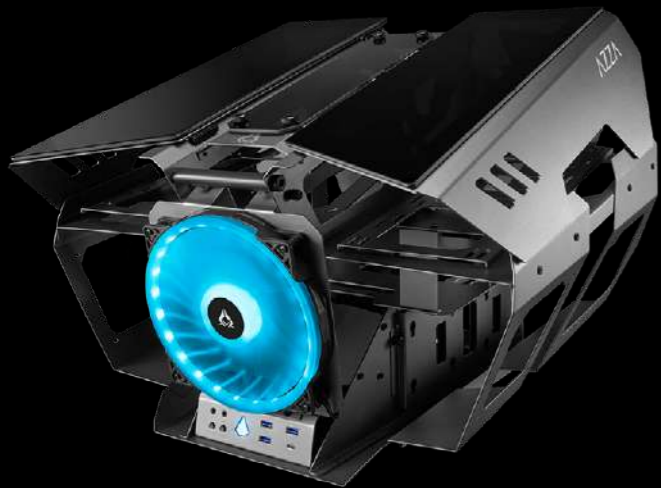
Model	
Model Name:	Cast
Model Number:	CSAZ-808W-M/CSAZ-808B-M
Specifications	
Type:	ATX Mid Tower
Color:	White, Black
Side Panel Window:	Top panel: Aluminum wing Bottom panel: Aluminum wing Rear panel: Steel plate Front panel: Aluminum plates
Max CPU Cooler Height:	Up to 165 mm
Max GPU Length:	Up to 360 mm long video card (Horizontal/ Vertical)
Motherboard Compatibility:	ATX
Power Supply:	ATX
Cable Routing Space:	35mm
Radiator Mounting:	360mm radiator in the front
Available Fan Ports:	3x120mm or 2x140mm Fan ports in the front 1x120mm fan ports in the rear (1xHurricane III Digital RGB Fan included)
Expansion	
External 5.25" Drive Bays:	0
Internal 2.5" Drive Bays:	Up to 3 (Convertible with 3.5"HDDx1)
Internal 3.5" Drive Bays:	Up to 1
Expansion Slots:	6 (6 slots horizontal or 3 slots vertical)
Front I/O Ports:	Power button, HD Audio, USB 3.0 x 2, Type C
Physical Specifications	
Metal Chassis Dimensions (HxWxD)	470x220x460mm /18.5x8.6x18.1 inches
Weight:	10.9 kg /24.03 Lbs
Features	
Outer Appearance:	All external panels are made of aluminum, the open chassis makes assembly and cleaning easier, and the gull-wing left side panel design makes it easy to adjust and clean on usually.
Digital RGB Light Effects:	Addressable RGB fan on the rear. All addressable RGB light devices controlled by motherboard.
Water Cooling:	Supports radiators up 280/360mm in the Front
Power Supply Support:	Bottom mounted ATX Power Supply



Model	
Model Name	Cube 802
Model Number	CSAZ-802/CSAZ-802F
Specifications	
Type	ATX - ITX Full Tower
Color	Black(exterior)/black(interior)
Side Panel Window	Left - Right - Top side of panel : Tempered Glass With Rubber Mounts
Max CPU Cooler Height	UP to 165mm
Max Video Card Length	Up to 320mm long Video card
Power Supply	Not Included
Motherboard Compatibility	ATX - Micro ATX- Mini ITX
Expansion	
External 5.25" Drive Bays	0
Internal 2.5" Drive Bays	Up to 2
Internal 3.5" Drive Bays	Up to 1
Expansion Slots	7
Light Effects	
Digital RGB Light Effects (both variants come with digital RGB light strips)	All digital RGB light strips are controlled by RF remote. For model CSAZ-802F, up to 5 digital RGB fans can be controlled by the motherboard. For model CSAZ-802F, please plug all digital RGB fans into an RGB 5V connector on a WS2812B-compliant motherboard. The digital RGB fans can then be controlled using the motherboard's native lighting control software. If you do not have a WS2812B-compliant motherboard that supports digital RGB lights, then you can connect the digital RGB fans into the included RF receiver instead, and control them using the included RF controller. To prevent the connector on a WS2812B motherboard or the RF receiver from shorting out, please do not daisy-chain more than 5 digital RGB fans together.
Physical Specifications	
Metal Chassis dimensions(HxWxD)	350x350x350mm / 13.8x13.8x13.8 inches
Dimension with Case Stand(HxWxD)	593x500x514mm / 23.3x19.7x20.2 inches
Weight	13.8kg /30.4lbs
Features	
Tempered Glass on Three Sides Window	High-quality tempered glass side window allows for clear visuals to inner components
Available Fan Ports	4x120mm ports in the front (4xHurricane II Digital RGB Fan included for model CSAZ-802F only) 1x120mm port in the rear (1xHurricane II Digital RGB Fan included for model CSAZ-802F only)
Water Cooling	Supports radiators up to 240mm in the Front
Isolated Chamber	Dual-chamber design, Power Supply is housed in one of the chamber bottoms, preventing its heat from affecting other components
Easy Installation Cooler	A pre-cut hole for easy installation of CPU Cooler, eliminating the need to remove the motherboard
Accessories	1x RF Connector for model CSAZ-802 2x RF Connectors for model CSAZ-802F 1x RF Remote Controller 1x Designed Case Stand 1x Fan Metal Protection Net Grill



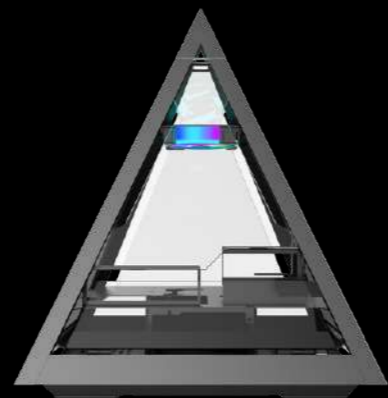
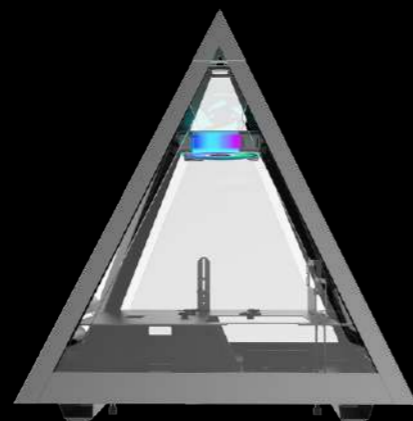
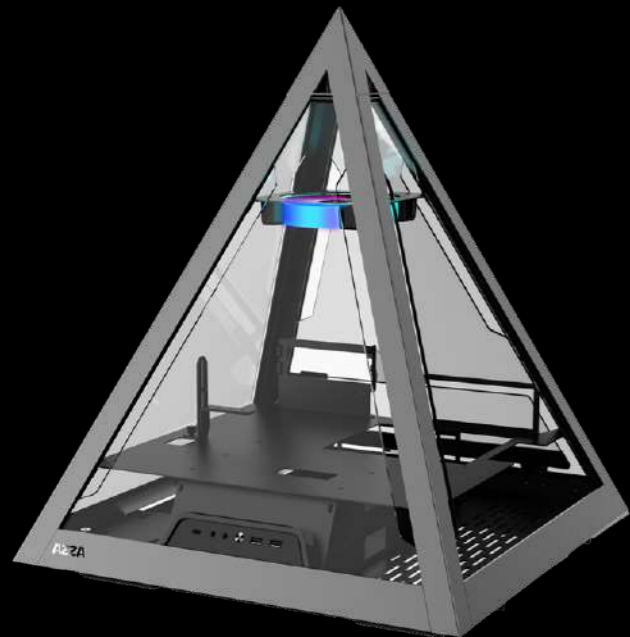
Model	
Model Name	CUBE MINI 805
Model Number	CSAZ-805
Specifications	
Type	Mini ITX Tower
Color	Silver aluminum(exterior/interior)
Side Panel Window	Slidable tempered glass panelx2pcs and a magnetic tempered glass.
Max CPU Cooler Height	UP to 130mm
Max Video Card Length	Up to 200mm long Video card
Power Supply	Not included
Motherboard Compatibility	Mini ITX
Expansion	
External 5.25" Drive Bays	0
Internal 2.5" Drive Bays	Up to 2
Internal 3.5" Drive Bays	0
Expansion Slots	3
Front Ports	USB3.0 x 2, HD Audio
Physical Specifications	
Metal Chassis Dimensions (HxWxD)	260x260x260mm/10.2x10.2x10.2 inch
Dimension with Case Stand(HxWxD)	472x371x372mm / 18.6x14.6x14.6 inch
Weight	5.4kg /11.9lbs
Features	
Addressable RGB Light Effects	Addressable RGB fan on the front. All addressable RGB light devices controlled by motherboard.
Tempered Glass Side Window	High-quality tempered glass side window allows for clear visuals to innercomponents
Available Fan Ports	1x120mm or 1x140mm fan port on the front (1x140mm AZZA Hurricane II Digital RGB fan included) 1x80mm fan port in the rear (1x80mm black fan included)
Water Cooling:	Supports radiators up to 120/140mm in the Front
Isolated Chamber	Dual-chamber design. Power Supply is housed in one of the chamber bottoms, preventing its heat from affecting other components.
Easy Installation Cooler	A pre-cut hole for easy installation of CPU Cooler, eliminating the need to remove the motherboard



Model	
Model Name:	OVERDRIVE
Name:	CSAZ-807
Specifications	
Type:	ATX Tower
Color:	1.5~2.0mm SPCC+ 2.5mm Aluminum
Top Panel:	Aluminum and tempered glass wing
Max CPU Cooler Height:	Up to 80mm
Max GPU Length:	Up to 400mm long Video card (Horizontal)
Max Cooling Tube Reservoir Length:	UP to 300mm
Power Supply:	ATX
Motherboard Compatibility:	<305x280mm E-ATX \ ATX \ Micro ATX \ Mini ITX
Expansion	
External 5.25" Drive Bays:	0
Internal 2.5" Drive Bays:	Up to 2
Internal 3.5" Drive Bays:	Up to 2 (Convertible with 2.5"SSD x 2)
Expansion slots:	3+3
Front Ports:	3xUSB 3.0 \ HD Audio \ Type C \ Metal power button
Physical Specifications	
Metal Chassis Dimensions (HxWxD)	440x570x590mm/17.3x22.4x23.2 inch
Weight:	23kg /50.7lbs
Features	
Outer Appearance:	All external panels are made of aluminum with two glass top panel, gull-wing panel design makes it easy to adjust and clean on usually.
Available Fan Ports:	Front: 1 x 200mm fan port (1x 200mm Addressable RGB fan included) Top: 6 x 120mm/ 4 x 140mm fan ports Sides: 6 x 120mm fan ports
Water Cooling:	Top: Supports radiators up to 280/360mm x 2 Sides: Supports radiators up to 360mm x 2
Isolated Chamber:	ATX Power supply inside its own isolated chamber, preventing its heat from affecting other components
Easy Installation Cooler:	A pre-cut hole for easy installation of CPU Cooler, eliminating the need to remove the motherboard
Accessories	Radiator bracket x 2 - Support 280/360mm on top two sides. 300 mm PCI-e 3.0 Riser Cable AZZA Hub (RGB+Fan Controller) x1 PCI-e Slot Brackets x2 Decorative Backplates x2



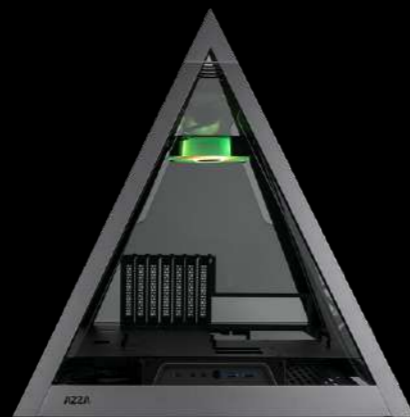
Model	
Model Name	Opus
Model Number	CSAZ-809
Specifications	
Type	ATX
Color	Space gray and Black glass (exterior) / Black (interior)
Side Panels	4 Tempered glass panels Sandblasted anodized aluminum structure
Max CPU Cooler Height	Up to 60mm
Max Video Card Length	Up to 360mm (Vertical)
Power Supply	Not Included
Motherboard Compatibility	<305x280mm E-ATX, ATX, Micro-ATX, Mini-ITX
Expansion	
External 5.25" Drive Bays	0
Internal 2.5" Drive Bays	Up to 2
Internal 3.5" Drive Bays	1
Expansion Slots	3 (Vertical)
I/O Ports	Power button, USB 3.0 x2, Type C x1
Physical Specifications	
Dimensions (HxWxD)	539 x 320 x 320 mm / 21.2 x 12.6 x 12.6 inches
Weight	8.7 kg / 19.2 lbs
Features	
Tempered Glass	High-quality tempered glass panels allow for clear visuals of inner components
Available Fan Ports	3 x 120 mm ports on the rear
Included Fan	None
Radiator Support	Supports radiators up 360 mm
Accessories	30 cm PCI-e 3.0 Riser Cable & Power Mesh Another 30cm PCI-e 4.0 extension cable version is available



Model	
Model Name:	PYRAMID 804
Name:	CSAZ-804
Specifications	
Type:	ATX Tower
Color:	1.5~2.0mm SPCC+ 2.5mm Aluminum
Side Panel Window:	4 sides of top panel are tempered glass
Max. CPU Cooler Height:	UP to 80mm
Max. GPU Dimensions:	L=300 mm / W=132 mm / H=47 mm (Horizontal)
Power Supply:	Not included
Motherboard Compatibility:	<305 x280mm SSI-CEB \ ATX
Expansion	
External 5.25" Drive Bays:	0
Internal 2.5" Drive Bays:	Up to 2
Internal 3.5" Drive Bays:	Up to 1 (Convertible with 2.5"SSDx1)
Expansion Slots:	2
Front Ports:	2xUSB 3.0 \ HD Audio \ Type C \ Metal Power Button
Physical Specifications	
Metal Chassis Dimensions (HxWxD)	558x490x490/22x19.3x19.3 inch
Physical Dimensions (HxWxD)	585x490x490mm/23x19.3x19.3 inch
Weight:	14kg /30.9lbs
Features	
Tempered Glass Side Window:	High-quality tempered glass side window allows for clear visuals to inner components
Available Fan Ports:	1x120mm Fan port in the Top(1x 120mm Hurricane II Digital RGB Fan included) 3x120mm Fan port on the Bottom
Water Cooling:	Supports radiators up to 360mm on the bottom
Isolated Chamber:	ATX Power supply inside its own isolated chamber, preventing its heat from affecting other components
Easy Installation Cooler:	A pre-cut hole for easy installation of CPU Cooler, eliminating the need to remove the motherboard
Accessories	15cm PCI-E 3.0 extension cable for VGA card(Support EATX \ ATX MB) Adjustable video card holder Stand & Tempered glass (optional)



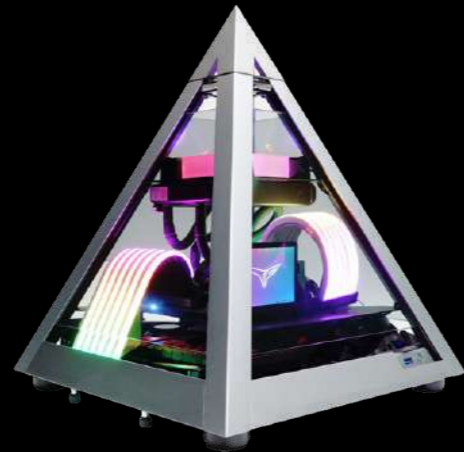
Model	
Model Name:	PYRAMID 804
Name:	CSAZ-804
Specifications	
Type:	ATX Tower
Color:	1.5~2.0mm SPCC+ 2.5mm Aluminum
Side Panel Window:	4 sides of top panel are tempered glass
Max. CPU Cooler Height:	UP to 80mm
Max. GPU Dimensions:	L=300 mm / W=132 mm / H=47 mm (Horizontal)
Power Supply:	Not included
Motherboard Compatibility:	<305 x280mm SSI-CEB 、 ATX
Expansion	
External 5.25" Drive Bays:	0
Internal 2.5" Drive Bays:	Up to 2
Internal 3.5" Drive Bays:	Up to 1 (Convertible with 2.5"SSDx1)
Expansion Slots:	2
Front Ports:	2xUSB 3.0 、 HD Audio 、 Type C 、 Metal Power Button
Physical Specifications	
Metal Chassis Dimensions (HxWxD)	558x490x490/22x19.3x19.3 inch
Physical Dimensions (HxWxD)	585x490x490mm/23x19.3x19.3 inch
Weight:	14kg /30.9lbs
Features	
Tempered Glass Side Window:	High-quality tempered glass side window allows for clear visuals to inner components
Available Fan Ports:	1x120mm Fan port in the Top(1x 120mm Hurricane II Digital RGB Fan included) 3x120mm Fan port on the Bottom
Water Cooling:	Supports radiators up to 360mm on the bottom
Isolated Chamber:	ATX Power supply inside its own isolated chamber, preventing its heat from affecting other components
Easy Installation Cooler:	A pre-cut hole for easy installation of CPU Cooler, eliminating the need to remove the motherboard
Accessories	15cm PCI-E 3.0 extension cable for VGA card(Support EATX 、 ATX MB) Adjustable video card holder Stand & Tempered glass (optional)



Model	
Model Name:	PYRAMID 804
Name:	CSAZ-804V
Specifications	
Type:	ATX Tower
Color:	1.5~2.0mm SPCC+ 2.5mm Aluminum
Side Panel Window:	4 sides panel are Tempered Glass
Max. CPU Cooler Height:	UP to 95mm
Max. GPU Dimensions:	L=280 mm / W=80 mm / H=132 mm (Vertical)
Power Supply:	Not Included
Motherboard Compatibility:	<305x280mm SSI-CEB \ ATX
Expansion	
External 5.25" Drive Bays:	0
Internal 2.5" Drive Bays:	Up to 2
Internal 3.5" Drive Bays:	Up to 1 (Convertible with 2.5"SSDx1)
Expansion slots:	7
Front Ports:	2xUSB 3.0 \ HD Audio \ Type C \ Metal power button
Physical Specifications	
Metal Chassis Dimensions (HxWxD)	558x490x490/22x19.3x19.3 inch
Dimention with Case Stand(HxWxD)	589x490x490mm/23.2x19.3x19.3 inch
Weight:	14.1kg /31.1lbs
Features	
Tempered Glass Side Window:	High-quality tempered glass side window allows for clear visuals to inner components
Available Fan Ports:	1x120mm Fan port in the Top(1x 120mm Hurricane II Digital RGB Fan included) 3x120mm Fan port in the Bottom
Water Cooling:	Supports radiators up to 360mm on the Botton CPU Air Coolers <95mm
isolated chamber:	ATX Power supply inside its own isolated chamber, preventing its heat from affecting other components
Easy installation Cooler:	A pre-cut hole for easy installation of CPU Cooler, eliminating the need to remove the motherboard
Accessories	Stand & Tempered glass(optional)



Model	
Model Name:	PYRAMID Mesh
Model Number:	CSAZ-804M
Specifications	
Type:	ATX Tower
Color:	1.5~2.0mm SPCC+ 2.5mm Aluminum
Side Panel Window:	4 sides panel are full metal mesh
Max. CPU Cooler Height:	UP to 95mm
Max. GPU Length:	L=330 mm / W=150 mm / H=70 mm (Horizontal)
Power Supply:	ATX
Motherboard Compatibility:	<305x280mm E-ATX · ATX · Micro ATX · Mini ITX
Expansion	
External 5.25" Drive Bays:	0
Internal 2.5" Drive Bays:	Up to 2
Internal 3.5" Drive Bays:	Up to 1 (Convertible with 2.5"SSDx1)
Expansion Slots:	3
Front Ports:	2xUSB 3.0 · HD Audio · Type C · Metal power button
Physical Specifications	
Metal Chassis Dimensions (HxWxD)	558x490x490/22x19.3x19.3 inch
Dimensions with Case Stand(HxWxD)	585x490x490mm/23x19.3x19.3 inch
Weight:	12.9kgs /28.4lbs
Features	
Metal Mesh Side Window:	The metal iron mesh not only improves the heat dissipation effect but also has the visual beauty of light transmission.
Available Fan Ports:	1 x 120mm Fan port in the Top (1x 120mm Hurricane III Digital RGB Fan included) 5 x 120mm Fan port in the Bottom
Water Cooling:	Supports radiator up to 360mm on the bottom right.
Isolated Chamber:	ATX Power supply inside its own isolated chamber, preventing its heat from affecting other components.
Easy Installation Cooler:	A pre-cut hole for easy installation of CPU Cooler, eliminating the need to remove the motherboard.
Accessories:	200mm PCI-E 4.0 extension cable for VGA card (Support EATX · ATX MB) Adjustable video card holder



Model	
Model Name:	PYRAMID MINI 806
Model Number:	CSAZ-806
Specifications	
Type:	MINI ITX Tower
Material:	1.5mm SPCC+ 2.0mm Aluminum
Side Panel Window:	4 sides panel are tempered glass
Max CPU Cooler Height:	UP to 85mm
Max Video Card Length:	Up to 280mm long video card (Horizontal)
Power Supply:	Support SFX power supply only
Motherboard Compatibility:	Mini ITX
Expansion	
External 5.25" Drive Bays:	0
Internal 2.5" Drive Bays:	Up to 2
Internal 3.5" Drive Bays:	0
Expansion Slots:	2
Front Ports:	Power Button · 1xUSB 3.0 · HD Audio
Physical Specifications	
Metal Chassis Dimensions (HxWxD)	435 x 368 x 368 mm/17.1 x 14.5 x 14.5 inches
Weight:	6.3kg/13.9lbs
Features	
Tempered Glass Side Window:	High-quality tempered glass side window allows for clear visuals to inner components
Available Fan Ports:	1x120mm Fan port in the Top (1x 120mm Hurricane II Digital RGB Fan included)
Water Cooling:	Supports radiators up to 120mm on the Top
Isolated Chamber:	SFX power is on the bottom Prevent its heat from affecting other components
Easy Installation Cooler:	A pre-cut hole for easy installation of CPU Cooler, eliminating the need to remove the motherboard
Accessories:	20cm PCI-E 3.0 Extend cable for VGA card (included)



CSAZ-804



CSAZ-804V



CSAZ-804L



CSAZ-804M

MODEL	CSAZ-804	CSAZ-804V	CSAZ-804L	CSAZ-804M
	VIDEO CARD (Horizontal)	VIDEO CARD (Vertical)	VIDEO CARD (Horizontal)	VIDEO CARD (Horizontal)
	ACCESS I/O PORTS VIA FLIP GLASS	NO FLIP GLASS	NO FLIP GLASS	NO FLIP GLASS 4 sides panel are full metal mesh
	hard drive bay	hard drive bay	Supports up to 2 x 120mm fan hard drive bay	Supports up to 2 x 120mm fan hard drive bay
	Disassemble to the back	Disassemble downward	Disassemble downward	Disassemble downward
Expansion slots	2	7	3	3
Max GPU Dimensions	L=300 mm / W=132 mm / H=47 mm	L=280 mm / W=80 mm / H=132 mm	L=330 mm / W=150 mm / H=70 mm	L=330 mm / W=150 mm / H=70 mm
Max CPU Cooler Height	Up to 80mm	Up to 95mm	Up to 95mm	Up to 95mm
Fan Ports	Top: 1 x 120mm	Top: 1 x 120mm	Top: 1 x 120mm / 140mm Bottom: 5 x 120mm	Top: 1 x 120mm / 140mm Bottom: 5 x 120mm
Water Cooling	Top: 1 x 120mm Bottom: 1 x 360mm	Top: 1 x 120mm Bottom: 1 x 360mm	Top: 1 x 120mm Bottom: 1 x 360mm (right)	Top: 1 x 120mm Bottom: 1 x 360mm (right)
Accessories	15cm PCI-E 3.0 extension cable for VGA card(Support EATX - ATX MB) Adjustable video card holder		20cm PCI-E 3.0 or 4.0 extension cable for VGA card(Support EATX - ATX MB) Adjustable video card holder	20cm PCI-E 4.0 extension cable for VGA card(Support EATX - ATX MB) Adjustable video card holder



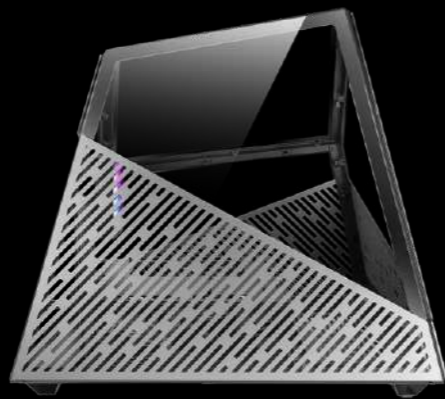
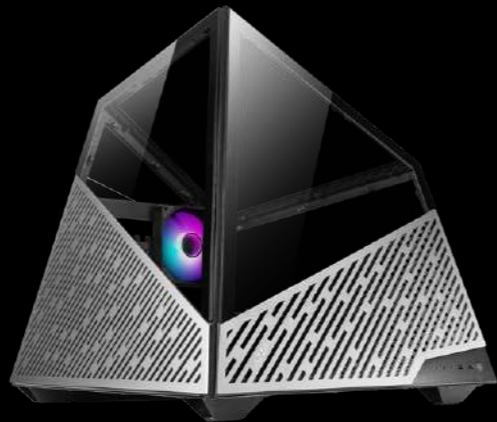
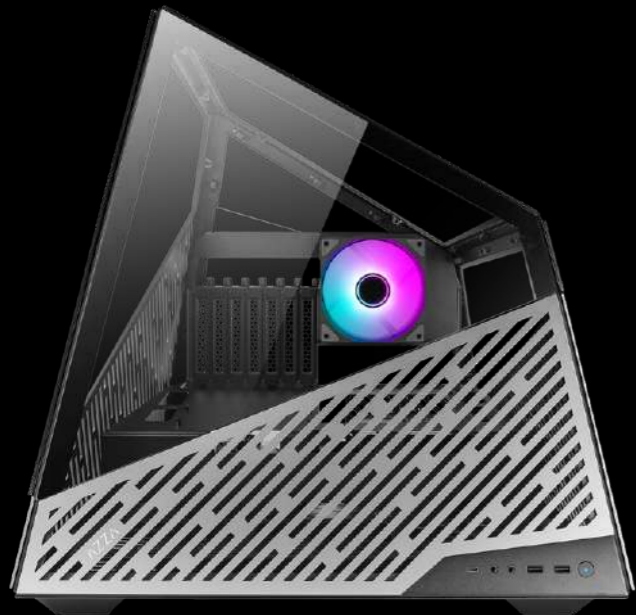
GAMING CASE



Model	
Model Name	Regis
Model Number	CSAZ-902
Specifications	
Type	ATX Cube Enclosure
Color	Smoke Gray with Gold trim and Black glass (exterior) / Black (interior)
Side Panels	3 Tempered glass panels 2 Anodized brushed-aluminum side panels
Max CPU Cooler Height	UP to 210mm
Max Video Card Length	Up to 336mm (Horizontal) Up to 320mm (Vertical)
Power Supply	Not Included
Motherboard Compatibility	ATX, Micro
Expansion	
External 5.25" Drive Bays	0
Internal 2.5" Drive Bays	Up to 2
Internal 3.5" Drive Bays	1
Expansion Slots	7 (Horizontal) + 3 (Vertical)
I/O Ports	Power button, LED button, HD Audio, USB 3.0 x2, Type C x1
Lighting Effects	
Digital RGB Lighting Effects	An infinity mirror lighting design and backlit logo populates the front of the case. All digital RGB lighting devices can be controlled with the included AZZA hub or with motherboard software through onboard 3-pin ARGB headers.
Physical Specifications	
Dimensions with Case Stand (HxWxD)	610 x 481 x 529 mm / 24 x 19 x 21 inches
Weight:	12.5kg /27.6lbs
Features	
Tempered Glass	High-quality tempered glass side panels allows for clear visuals of inner components
Available Fan Ports	2x 120 mm or 2x 140 mm ports on the right 2x 120 mm or 2x 140 mm ports on the left 1x 120 mm or 1x 140 mm port in the rear
Included Fan	1x 140 mm Black fan in the rear
Radiator Support	Supports radiators up 240 mm / 280 mm on the right Supports radiators up 240 mm / 280 mm on the left
Accessories	1x Case Stand 1x AZZA Hub



Model	
Model Name	Sanctum
Model Number	CS-AZ-810
Specifications	
Type	ATX
Chassis Thickness	SPCC 0.8-1.2 mm / AL 2mm
Max CPU Cooler Height	Up to 190mm
Max Video Card Length	Up to 400mm
Power Supply	Not included
Motherboard Compatibility	EATX(<300mm) ATX, Micro-ATX, Mini-ITX
Expansion	
External 5.25" Drive Bays	0
Internal 2.5" Drive Bays	Up to 2
Internal 3.5" Drive Bays	Up to 2
Expansion Slots	7
I/O Ports	Power button, Reset button, HD Audio, USB 3.0 x 2, Type-C
Dimensions (HxWxD)	
Dimensions (HxWxD)	475 x 356 x 455 mm / 18.7 x 14 x 17.9 inches
Weight	13.3kg / 29.3 lbs
Features	
Addressable RGB Light	All addressable RGB light devices controlled by motherboard.
Available Fan Port	2x120mm fan ports in the front (2x120mm LFO-4312D ARGB fan included) 3x120mm fan ports on the side 2x120mm fan port in the rear (2x120mm LFO-4312D ARGB fan included)
Water Cooling	Supports radiators up to 360 mm on the side
Power Supply Support	Bottom mounted ATX power supply



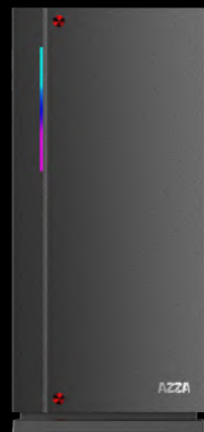
Model	
Model Name	Mesa
Model Number	CSAZ-811
Specifications	
Type	ATX
Chassis thickness	SPCC 1~1.5mm / AL 3mm
Max CPU Cooler Height	Up to 140mm
Max Video Card Length	Up to 380mm
Power Supply	Not included
Motherboard Compatibility	ATX, Micro-ATX, Mini-ITX
Expansion	
External 5.25" Drive Bays	0
Internal 2.5" Drive Bays	Up to 4
Internal 3.5" Drive Bays	Up to 2
Expansion Slots	7
I/O Ports	Power button, Reset button, HD Audio, USB 3.0 x 2, Type-C
Physical Specifications	
Dimensions (HxWxD)	494x489x539 mm / 19.4 x 19.3 x 21.2 inches
Weight	10.3kg / 22.7 lbs
Features	
Addressable RGB Light	Addressable RGB fan on the rear. All addressable RGB light devices controlled by motherboard.
Available Fan Port	1 x 120 mm ports on the rear (1x120mm LFO-4312D ARGB fan included) 3 x 120 mm ports on the front (with radiator bracket)
Water Cooling	Supports radiators up to 360 mm in the front
Power Supply Support	Bottom mounted ATX power supply



Model	
Model Name:	AUGMENT
Model Number:	CSAZ-510
Specifications	
Type:	ATX Full Tower
Color:	Black/Black(interior)
Side Panel Window:	Left side panel: toolless mounting glass panel Right side panel: toolless mounting metal panels
Max CPU Cooler Height:	UP to 180mm
Max Video Card Length:	Up to 420mm long video card
Power Supply:	Not included
Motherboard Compatibility:	EATX(<277mm) / ATX / Micro ATX / ITX
Expansion	
External 5.25" Drive Bays:	0
Internal 2.5" Drive Bays:	Up to 4
Internal 3.5" Drive Bays:	Up to 1
Expansion Slots:	8
Top Ports:	Power button, LED button, HD Audio, USB 3.0 x 2, Type-C
Physical Specifications	
Dimensions (HxWxD)	490x235x517mm/19.3x9.3x20.4 inches
Weight:	10.1kg /22.3 lbs
Features	
Tempered Glass Sides Window:	High-quality tempered glass side window allows for clear visuals to inner components
Addressable RGB Light Effects:	Addressable RGB devices connected to the ARGB control board can be controlled with the LED button or motherboard lighting software.
Available Fan Ports:	3x120mm or 3x140mm Fan ports in the front(3x120mm LFO-4612D ARGB fan included) 3x120mm or 3x140mm Fan ports on the top 1x120mm or 1x140mm Fan port in the rear (1x120mm LFO-4312D ARGB fan included) 2x120mm Fan ports on the Power Supply Shroud
Water Cooling:	Supports radiators up to 280/360mm on the top Supports radiators up to 360/420mm in the front
Dust Filters:	Removable dustproof net on the top,dust filter on bottom of chassis.
Power Supply Support:	Bottom mounted ATX Power Supply



Model	
Model Name:	Storm 6000-ARGB
Model Number:	CSAZ-6000ARGB/B
Specifications	
Type:	ATX Full Tower
Color:	Black/Black(interior)
Side Panel Window:	Tempered glass side panel with EVA anti-vibration pad
Max CPU Cooler Height:	Up to 175mm
Max Video Card Length:	Up to 420 mm long video card
Power Supply:	Not included
Motherboard Compatibility:	E-ATX(<272mm), ATX, Micro-ATX
Expansion	
External 5.25" Drive Bays:	1
Internal 2.5" Drive Bays:	Up to 6
Internal 3.5" Drive Bays:	Up to 4
Expansion Slots:	10
Top Ports:	Power button, LED button, HD Audio, USB 2.0 x 2, USB 3.0x2
Physical Specifications	
Physical Dimension (HxWxD)	537.7 x225x 525 mm/21.17x8.86x20.67 inches
Weight:	11.1Kg /24.4lbs
Features	
Addressable RGB Light Effects:	ARGB fans are controlled using the LED button. All addressable RGB devices can sync with the motherboard, allowing the motherboard software to control lighting directly.
Available Fan Ports:	2x120mm or 2x140mm fan ports in the front (2x120mm LFO-4112D addressable ARGB fan included) 3x120mm or 2x140mm fan ports on the top (2x120mm LFO-4112D addressable ARGB fan included) 1x120mm or 1x140mm fan port in the rear (1x120mm LFO-4112D addressable ARGB fan included)
Water Cooling:	Supports radiators up to 280mm in the front Supports radiators up to 360mm in the top
Dust Filters:	Removable (magnetic) dust filter on bottom of chassis.
Power Supply Support:	Bottom mounted ATX Power Supply



Model	
Model Name:	ZIRCON 7000
Model Number:	CSAZ-7000B
Specifications	
Type:	ATX Full Tower
Color:	Black/Black(interior), White/White(interior)
Side Panel Window:	Tempered glass on both sides
Max CPU Cooler Height:	UP to 165mm
Max Video Card Length:	Up to 390mm long video card (Horizontal/ Vertical)
Power Supply:	Not included
Motherboard Compatibility:	E-ATX(<270mm) · ATX · Micro ATX
Expansion	
External 5.25" Drive Bays:	0
Internal 2.5" Drive Bays:	Up to 5
Internal 3.5" Drive Bays:	Up to 5
Expansion Slots:	8(Horizontal)+2(Vertical)
Top Ports:	Power button, reset button, HD Audio, USB 3.0 x 2, Type C
Physical Specifications	
Case Dimensions (HxWxD):	515 x 233 x 515mm / 20.3 x 9.2 x 20.3 inches
Weight:	14.9kg /32.8lbs
Features	
Tempered Glass Sides Window:	High-quality tempered glass side window allows for clear visuals to inner components
Addressable RGB Light Effects:	Addressable RGB light I/O ports and strip on the front panel. All Addressable RGB light devices sync with the motherboard, allowing the motherboard software to directly control the lighting.
Available Fan Ports:	3x120mm or 2x140mm Fan ports in the front 3x120mm or 2x140mm Fan ports on the top 1x120mm Fan port in the rear (Included fan: Front - 1 x Black fan ; Rear - 1 x Black fan)
Water Cooling:	Supports radiators up to 280/360mm in the Front Supports radiators up to 280/360mm on the Top
Dust Filters:	Removable (magnetic) dustproof net on the top and front, slide-out dust filter on the bottom of chassis.
Power Supply Support:	Bottom mounted ATX Power Supply
Others Features:	Cable management bar on both sides. Can adjust the video card holder to fit your system needs. Pump bracket included, compatible with a 2.5" SSD, or a 3.5" HDD.



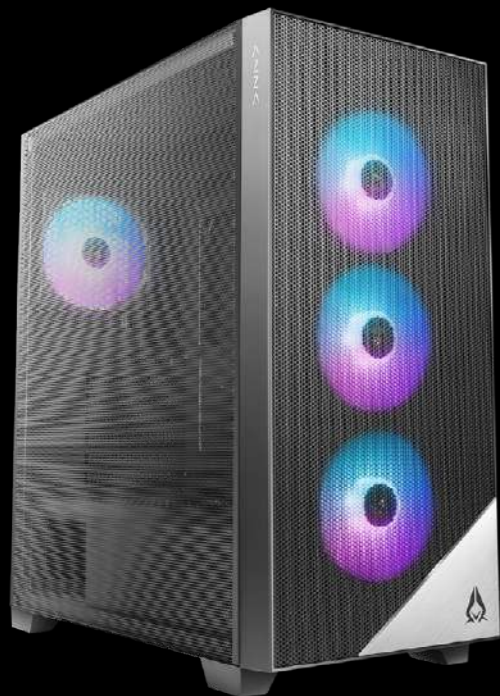
Model	
Model Name:	Guardian Glass
Model Number:	CSAZ-520WG/CSAZ-520BG
Specifications	
Type:	ATX Mid Tower
Color:	White/White(interior) · Black/Black(interior)
Side Panel Window:	Left side panel: Slidable tempered glass panel
Max CPU Cooler Height:	UP to 170 mm
Max Video Card Length:	Up to 400 mm long video card
Power Supply:	Not included
Motherboard Compatibility:	E-ATX<300 · ATX · Micro ATX · ITX
Expansion	
External 5.25" Drive Bays:	0
Internal 2.5" Drive Bays:	Up to 4
Internal 3.5" Drive Bays:	Up to 2
Expansion Slots:	7
Top Ports:	Power button, LED button, HD Audio, USB 3.0 x 2, Type C
Physical Specifications	
Physical Dimension(HxWxD)	486x220x466mm/19.1x8.7x18.3 inches
Weight:	8.1 kg /17.9 lbs
Features	
Addressable RGB Light Effects:	Addressable RGB light fan in the rear. All Addressable RGB light sync. devices connected to the 6 ports ARGB hub , allowing the LED button to directly control the ARGB lighting
Available Fan Ports:	3x120mm or 3x140mm fan ports in the front 3x120mm or 2x140mm fan ports on the top 2x120mm fan ports on the mb side 1x120mm fan port in the rear (1x120mm LFO-2512D ARGB Fan included)
Water Cooling:	Supports radiators up to 280/360mm in the Front Supports radiators up to 280/360mm in the Top
Dust Filters:	Removable (magnetic) dustproof net on the top, dust filter on bottom of chassis.
Power Supply Support:	Bottom mounted ATX Power Supply

CSAZ-430B/W-DF1

CSAZ-430B/W-DF2



Model	
Model Name:	APOLLO 430
Model Number	CSAZ-430B-DF1 /CSAZ-430B-DF2 / CSAZ-430W-DF1 / CSAZ-430W-DF2
Specifications	
Type	ATX Mid Tower
Color	Black/Black(interior), White/White(interior)
Side Panel Window	Left Side panel: Tempered Glass with rubber mounts
Max CPU Cooler Height	UP to 155mm
Max Video Card Length	Up to 370mm long video card
Power Supply	Not Included
Motherboard Compatibility	ATX - Micro ATX
Expansion	
External 5.25" Drive Bays	0
Internal 2.5" Drive Bays	Up to 6
Internal 3.5" Drive Bays	Up to 2
Expansion Slots	7
Top Ports	Power button, reset button, HD Audio, USB 3.0 x 2
Physical Specifications	
Case Dimension (HxWxD)	480x205x420mm/18.9x8.1x16.5 inches
Weight	7.9kg/17.4lbs
Features	
Tempered Glass Sides Window	High-quality tempered glass side window allows for clear visuals to inner components
Addressable RGB Light Effects	All ARGB light sync. devices connected to the ARGB control board, allowing the reset button or the motherboard software to directly control the ARGB lighting.
Available Fan Ports	3x120mm or 2x140mm Fan ports in the front 2x120mm or 2x140mm Fan ports on the top 1x120mm Fan port in the rear (1x120mm Hurricane II Addressable RGB Fan included for model CSAZ-430B-DF1 / CSAZ-430W-DF1) (1x120mm Addressable RGB Fan included for model CSAZ-430B-DF2 / CSAZ-430W-DF2)
Water Cooling	Supports radiators up to 240mm in the Front Supports radiators up to 240mm on the Top
Dust Filters	Removable (magnetic) dustproof net on the top and front, iron net on bottom of chassis.
Power Supply Support	Bottom mounted ATX Power Supply



Model	
Model Name:	Aero
Model Number:	CSAZ-480
Specifications	
Type:	ATX Mid Tower
Color:	Black/Black(interior)
Side Panel Window:	Left side panel: slidable iron mesh side panel
Max CPU Cooler Height:	UP to 170mm
Max Video Card Length:	Up to 400 mm long video card
Power Supply:	Not included
Motherboard Compatibility:	E-ATX · ATX · Micro ATX · ITX
Expansion	
External 5.25" Drive Bays:	0
Internal 2.5" Drive Bays:	Up to 4
Internal 3.5" Drive Bays:	Up to 2
Expansion Slots:	7
Top Ports:	Power button, LED button, HD Audio, USB 3.0 x 2
Physical Specifications	
Case Dimension (HxWxD)	483x220x445mm/19x8.7x17.5 inches
Weight:	6.1Kg /13.5lbs
Features	
Mesh side panel:	The full mesh side windows allow for clear visuals to inner components and increased air intake, having maximum airflow performance.
Addressable RGB Light Effects:	ARGB fans are controlled using the LED button. All addressable RGB devices can sync with the motherboard, allowing the motherboard software to control lighting directly.
Available Fan Ports:	3x120mm or 3x140mm fan ports in the front (3x120mm LFO-3812D addressable ARGB fan included) 3x120mm or 2x140mm fan ports on the top 1x120mm fan port in the rear (1x120mm LFO-3812D addressable ARGB PWM fan included) 2x120mm fan ports on the Power Supply Shroud
Water Cooling:	Supports radiators up to 280/360mm in the Front Supports radiators up to 280/360mm in the Top
Dust Filters:	Removable (magnetic) dustproof net on the top, dust filter on bottom of chassis.
Power Supply Support:	Bottom mounted ATX Power Supply

CSAZ-340F



Model	
Model Name:	CELESTA 340
Model Number:	CSAZ-340/ CSAZ-340F
Specifications	
Type:	ATX Mid Tower
Color:	Black/Black(interior)
Side Panel Window:	Left side panel: tempered glass with rubber mounts
Max CPU Cooler Height:	UP to 165mm
Max Video Card Length:	Up to 320mm long video card
Power Supply:	Not included
Motherboard Compatibility:	<275mm EATX · ATX · Micro ATX · ITX
Expansion	
External 5.25" Drive Bays:	0
Internal 2.5" Drive Bays:	Up to 4
Internal 3.5" Drive Bays:	Up to 2
Expansion Slots:	7
Top Ports:	Power button, reset button, led button, HD Audio, USB 3.0 x 1, USB2.0x2
Physical Specifications	
Case Dimension (HxWxD)	478X210X400mm/18.8X8.3X15.7 inches
Weight:	6kg /13.2lbs
Features	
Tempered Glass Sides Window:	High-quality tempered glass side window allows for clear visuals to inner components
Addressable RGB Light Effects:	Addressable RGB light strip in the front controlled the lighting by the LED button. To synchronize all addressable RGB light devices, it needs to be switched to be controlled only by the motherboard.
Available Fan Ports:	3x120mm or 3x140mm Fan ports in the front 2x120mm or 2x140mm Fan ports on the top 1x120mm Fan port in the rear
The available fan included:	CSAZ-340F: Rear - 1 x Black fan CSAZ-340 : Case only.
Water Cooling:	Supports radiators up to 240mm in the Top Supports radiators up to 280/360mm in the Front
Dust Filters:	Removable (magnetic) dustproof net on the top, steel dust filter on bottom of chassis.
Power Supply Support:	Bottom mounted ATX Power Supply



Model	
Model Name:	ECLIPSE 440
Model Number:	CSAZ-440
Specifications	
Type:	ATX Mid Tower
Color:	Black/Black(interior)
Side Panel Window:	Left side panel: tempered glass with rubber mounts
Max CPU Cooler Height:	Up to 165mm
Max Video Card Length:	Up to 360mm long video card
Power Supply:	Not included
Motherboard Compatibility:	<270mm E-ATX · ATX · Micro ATX · ITX
Expansion	
External 5.25" Drive Bays:	0
Internal 2.5" Drive Bays:	Up to 4
Internal 3.5" Drive Bays:	Up to 2
Expansion Slots:	7
Top Ports:	Power button, reset button, Led button, HD Audio, USB 3.0 x 1, USB2.0x2
Physical Specifications	
Case Dimension (HxWxD)	470x215x450/18.5x8.5x17.7 inches
Weight:	6.3kg /13.9lbs
Features	
Tempered Glass Sides Window:	High-quality tempered glass side window allows for clear visuals to inner components
Addressable RGB Light Effects:	All ARGB light sync. devices connected to the ARGB control board, allowing the LED button to directly control the ARGB lighting.
Available Fan Ports:	3x120mm or 3x140mm Fan ports in the front (1x120mm ARGB Fan included) 3x120mm or 2x140mm Fan ports on the top 2x120mm Fan ports on the top of PSU shroud 1x120mm Fan port in the rear
Water Cooling:	Supports radiators up to 280/360mm in the Front Supports radiators up to 240mm in the Top
Dust Filters:	Removable (magnetic) mesh net on the top, Steel dust filter on bottom of chassis.
Power Supply Support:	Bottom mounted ATX Power Supply
Accessories:	ARGB Controller Board



Model	
Model Name:	HIVE 450
Model Number:	CSAZ-450
Specifications	
Type:	ATX Mid Tower
Color:	Black/Black(interior)
Side Panel Window:	Left side panel: tempered glass with rubber mounts
Max CPU Cooler Height:	Up to 165mm
Max Video Card Length:	Up to 360mm long video card
Power Supply:	Not Included
Motherboard Compatibility:	<270mm E-ATX · ATX · Micro ATX · ITX
Expansion	
External 5.25" Drive Bays:	0
Internal 2.5" Drive Bays:	Up to 4
Internal 3.5" Drive Bays:	Up to 2
Expansion Slots:	7
Top Ports:	Power button, reset button, Led button, HD Audio, USB 3.0 x 1, USB2.0x2
Physical Specifications	
Case Dimension (HxWxD)	470x215x415mm/18.5x8.5x16.3 inches
Weight:	6.3kg /13.9lbs
Features	
Tempered Glass Sides Window:	High-quality tempered glass side window allows for clear visuals to inner components
Addressable RGB Light Effects:	All ARGB light sync. devices connected to the ARGB control board, allowing the LED button to directly control the ARGB lighting.
Available Fan Ports:	3x120mm or 3x140mm Fan ports in the front 3x120mm or 2x140mm Fan ports on the top 2x120mm Fan ports on the top of PSU shroud 1x120mm Fan port in the rear (1x120mm ARGB Fan included)
Water Cooling:	Supports radiators up to 280/360mm in the Front Supports radiators up to 240mm in the Top
Dust Filters:	Removable (magnetic) mesh net on the top, Steel dust filter on bottom of chassis.
Power Supply Support:	Bottom mounted ATX Power Supply
Accessories:	ARGB Controller Board



Model	
Model Name:	HIVE 450
Model Number:	CSAZ-450M
Specifications	
Type:	ATX Mid Tower
Color:	Black/Black(interior)
Side Panel Window:	Left side panel: tempered glass with rubber mounts
Max CPU Cooler Height:	UP to 165mm
Max Video Card Length:	Up to 360mm long video card
Power Supply:	Not Included
Motherboard Compatibility:	<270mm E-ATX · ATX · Micro ATX · ITX
Expansion	
External 5.25" Drive Bays:	0
Internal 2.5" Drive Bays:	Up to 4
Internal 3.5" Drive Bays:	Up to 2
Expansion Slots:	7
Top Ports:	Power button, reset button, Led button, HD Audio, USB 3.0 x 2, USB2.0x1
Physical Specifications	
Case Dimension (HxWxD)	470x215x415mm/18.5x8.5x16.3 inches
Weight:	6.3kg /13.9lbs
Features	
Tempered Glass Sides Window:	High-quality tempered glass side window allows for clear visuals to inner components
Addressable RGB Light Effects:	All ARGB light sync. devices connected to the 5pin ARGB control hub, allowing the LED button to directly control the ARGB lighting or switch to the motherboard sync. software to control.
Available Fan Ports:	3x120mm or 3x140mm Fan ports in the front(3x120mm ARGB Fan included) 3x120mm or 2x140mm Fan ports on the top 2x120mm fan ports on the top of PSU chamber 1x120mm Fan port in the rear(1x120mm ARGB Fan included)
Water Cooling:	Supports radiators up to 280/360mm in the Front Supports radiators up to 240mm in the Top
Dust Filters:	Removable (magnetic) mesh net on the top, Steel dust filter on bottom of chassis.
Power Supply Support:	Bottom mounted ATX Power Supply



Model	
Model Name	Inferno
Model Number	CSAZ-310DF
Specifications	
Type:	ATX Mid-Tower
Color:	Black (exterior)/Black (interior)
Side Panel Window:	Tempered Glass with Rubber Mounts
Max CPU Cooler Height	Up to 155mm
With Power Supply:	No
Motherboard Compatibility:	ATX, Micro ATX
Expansion	
External 5.25" Drive Bays:	1
Internal 2.5" Drive Bays:	Up to 6 (2 with metal tray)
Internal 3.5" Drive Bays:	Up to 2
Expansion slots:	7
Front Ports	2xUSB 3.0, HD Audio
Cooling System	
Fans Installed	Front 1x120mm AZZA Digital RGB fan, Rear 1x120mm AZZA Digital RGB fan
Physical Specs	
Dimensions(HxWxD)	480X205X475mm / 18.9X8.1X18.7 inches
Weight	6.7 kg / 14.8 lb
Features	
Digital RGB Light Effects	Digital RGB Light on Front, 2x120mm Digital RGB fans All Digital RGB light devices controlled by Digital RGB RF Remote
Max video Card Length	Supports up to 380mm long video cards
Tempered Glass Side Window	High-quality tempered glass with rubber mounted side window allows for clear visuals to inner components.
Available Fan Ports	3x120mm or 2x140mm ports on the Top 2x120mm or 2x140mm ports in the front (1x120mm Digital RGB Fan included) 1x120mm Fan port in the rear (1x120mm Digital RGB Fan included)
Water Cooling	Supports radiators up to 360mm on top/280mm in front
Isolated Chamber	Power supply is housed inside its own isolated chamber, preventing its heat from affecting other components.
Easy installation Cooler	A pre-cut hole for easy installation of CPU cooler, eliminating the need to remove the motherboard



Model	
Model Name	IRIS 330
Model Number	CSAZ-330
Specifications	
Type	ATX Mid Tower
Color	Black(exterior)/black(interior)
Side Panel Window	Left Side panel: Tempered Glass with rubber mounts
Max CPU Cooler Height	UP to 155mm
Max Video Card Length	Up to 380mm long video card
Power Supply	Not Included
Motherboard Compatibility	ATX
Expansion	
External 5.25" Drive Bays	0
Internal 2.5" Drive Bays	Up to 3
Internal 3.5" Drive Bays	Up to 2
Expansion Slots	7
Top Ports	Power button, Reset button, HD Audio, USB 3.0 x 1, USB2.0x2
Physical Specifications	
Case Dimension (HxWxD)	447x216x440mm/17.6 x 8.5 x 17.3 inches
Weight	5.49kg /12.1lbs
Features	
Tempered Glass Sides Window	High-quality tempered glass side window allows for clear visuals to inner components
Addressable RGB Light Effects	Addressable RGB light strips on the front panel and side port location, all controlled by RF Remote (2020 New version) ※ Without RF REMOTE before 2020 version, controlled by motherboard.
Available Fan Ports	3x120mm Fan ports in the front (2x120mm Digital RGB Fan included) 2x120mm Fan ports on the top 1x120mm Fan port in the rear 2x120mm Fan ports on the top of PSU chamber
Water Cooling	Supports radiators up to 240/360mm in the Front
Dust filters	Removable (magnetic) dustproof net on the top, iron net on bottom of chassis.
Power Supply Support	Bottom mounted ATX Power Supply



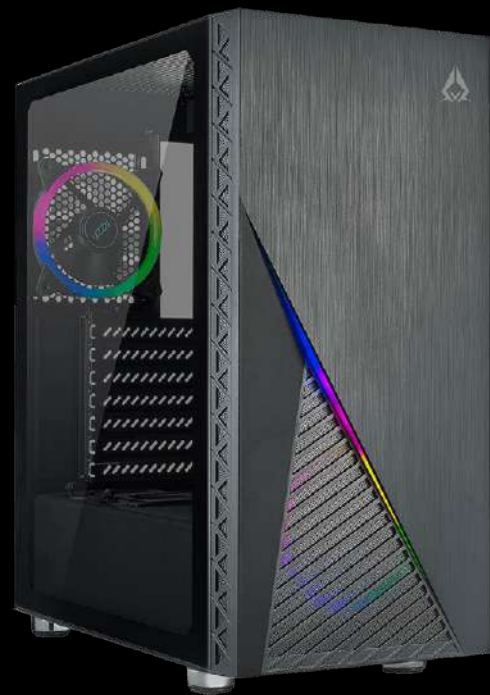
Model	
Model Name:	Octane
Model Number:	CSAZ-460A
Specifications	
Type:	ATX Mid Tower
Color:	Black/Black(interior), White/White(interior)
Side Panel Window:	Left Side panel: Slidable tempered glass panel
Max CPU Cooler Height:	Up to 165mm
Max Video Card Length:	Up to 360mm long video card
Power Supply:	Not Included
Motherboard Compatibility:	<270mm E-ATX · ATX · Micro ATX · ITX
Expansion	
External 5.25" Drive Bays:	0
Internal 2.5" Drive Bays:	Up to 4
Internal 3.5" Drive Bays:	Up to 2
Expansion Slots:	7
Top Ports:	Power button, reset button, Led button, HD Audio, USB 3.0 x 1, USB2.0x2
Physical Specifications	
Case Dimension (HxWxD)	470x215x443/18.5x8.5x17.4 inches
Weight:	6.4kg /14.1lbs
Features	
Tempered Glass Sides Window:	High-quality tempered glass side window allows for clear visuals to inner components
Addressable RGB Light Effects:	CSAZ-460A: All ARGB light synchronize devices connect to the ARGB control board. CSAZ-460B: Addressable RGB light strip in the front and all ARGB light synchronize devices make connections. Allowing the LED button to directly control the ARGB lighting, or switched to be controlled by the motherboard synchronize software..
Available Fan Ports:	3x120mm or 3x140mm Fan ports in the front(CSAZ-460A: 3x120mm ARGB fan included) 3x120mm or 2x140mm Fan ports on the top 1x120mm Fan port in the rear(CSAZ-460B: 1x120mm black fan included) 2x 120 mm fan ports on top of the power supply shroud
Water Cooling:	Supports radiators up to 280/360mm in the Front Supports radiators up to 240mm in the Top
Dust Filters:	Removable (magnetic) dustproof net on the top, iron net on bottom of chassis. CSAZ-460B: LED light guide mesh on the front.
Power Supply Support:	Bottom mounted ATX Power Supply



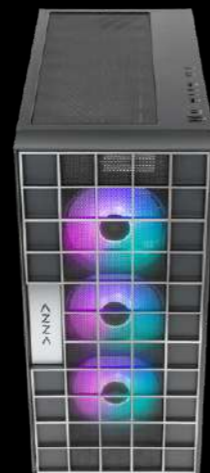
Model	
Model Name:	Prime
Model Number:	CSAZ-360
Specifications	
Type:	ATX Mid Tower
Color:	Black/Black(interior)
Side Panel Window:	Left side panel: Tempered glass with rubber mounts
Max CPU Cooler Height:	UP to 170mm
Max Video Card Length:	Up to 310mm long video card
Power Supply:	Not included
Motherboard Compatibility:	ATX · Micro ATX · ITX
Expansion	
External 5.25" Drive Bays:	0
Internal 2.5" Drive Bays:	Up to 3
Internal 3.5" Drive Bays:	Up to 2
Expansion Slots:	7
Top Ports:	Power button, LED button, HD Audio, USB 3.0 x 2
Physical Specifications	
Physical Dimension (HxWxD)	458x200x375mm/18x7.9x14.8 inches
Weight:	4.8kg /10.6lbs
Features	
Tempered Glass Sides Window:	High-quality tempered glass side window allows for clear visuals to inner components
Addressable RGB Light Effects:	ARGB fans are controlled using the LED button. All addressable RGB devices can sync with the motherboard, allowing the motherboard software to control lighting directly.
Available Fan Ports:	3x120mm or 2x140mm fan ports in the front (3x120mm LFO-4012D addressable ARGB fan included) 2x120mm fan ports on the top 1x120mm fan port in the rear 2x120mm fan ports on the top of Power Supply Shroud
Water Cooling:	Supports radiators up to 240mm in the front
Dust Filters:	Removable (magnetic) dustproof net on the top , removable dust filter on bottom of chassis.
Power Supply Support:	Bottom mounted ATX power supply



Model	
Model Name:	Spectra
Model Number:	CSAZ-280B/CSAZ-280W
Specifications	
Type:	ATX Mid Tower
Color:	Black/Black(interior), White/White(interior)
Side Panel Window:	Left side panel: Tempered glass with rubber mounts
Max CPU Cooler Height:	UP to 170mm
Max Video Card Length:	Up to 290mm long video card
Power Supply:	Not included
Motherboard Compatibility:	ATX · Micro ATX · ITX
Expansion	
External 5.25" Drive Bays:	0
Internal 2.5" Drive Bays:	Up to 1
Internal 3.5" Drive Bays:	Up to 2
Expansion Slots:	7
Top Ports:	Power button, LED button, HD Audio, USB 3.0 x 1, USB2.0x2
Physical Specifications	
Case Dimension (HxWxD)	458*200*365mm/18*7.9*14.4 inches
Weight:	4.4kg /9.7lbs
Features	
Tempered Glass Sides Window:	High-quality tempered glass side window allows for clear visuals to inner components
Addressable RGB Light Effects:	The LED button will cycle through different ARGB lighting modes.
Available Fan Ports:	3x120mm or 2x140mm fan ports in the front 2x120mm fan ports on the top 2x120mm fan ports on the top of PSU shroud 1x120mm fan port in the rear (1x120mm LFO-3612D ARGB fan included)
Water Cooling:	Supports radiators up to 240mm in the front
Dust Filters:	Removable (magnetic) dustproof net on the top and Front , removable dust filter on bottom of chassis.
Power Supply Support:	Bottom mounted ATX power supply



Model	
Model Name:	ZENO
Model Number:	CSAZ-350
Specifications	
Type:	ATX Mid Tower
Color:	Black/Black(interior)
Side Panel Window:	Left side panel: tempered glass with rubber mounts
Max CPU Cooler Height:	UP to165mm
Max Video Card Length:	Up to 320mm long video card
Power Supply:	Not included
Motherboard Compatibility:	<275mm EATX · ATX · Micro ATX · ITX
Expansion	
External 5.25" Drive Bays:	0
Internal 2.5" Drive Bays:	Up to 4
Internal 3.5" Drive Bays:	Up to 2
Expansion Slots:	7
Top Ports:	Power button, reset button, led button, HD Audio, USB 3.0 x 1, USB2.0x2
Physical Specifications	475x210x410 / 18.7x8.3x16.1 inches
Weight:	6kg /13.2lbs
Features	
Tempered Glass Sides Window:	High-quality tempered glass side window allows for clear visuals to inner components
Addressable RGB Light Effects:	Addressable RGB light strip in the front. All Addressable RGB light devices sync with the motherboard, allowing the motherboard software or LED button to directly control the lighting.
Available Fan Ports:	3x120mm or 3x140mm Fan ports in the front(1x120mm ARGB Fan included) 2x120mm or 2x140mm Fan ports on the top 1x120mm Fan port in the rear (1x120mm ARGB Fan included)
Water Cooling:	Supports radiators up to 280/360mm in the Front Supports radiators up to 240mm in the Top
Dust Filters:	Removable (magnetic) dustproof net on the top , iron net on bottom of chassis.
Power Supply Support:	Bottom mounted ATX Power Supply



Model	
Model Name:	Neo
Model Number:	CSAZ-500
Specifications	
Type:	ATX Mid Tower
Color:	Black/Black(interior)
Side Panel Window:	Hinged flip glass side panels
Max CPU Cooler Height:	UP to 170mm
Max Video Card Length:	Up to 390mm long video card
Power Supply:	Not included
Motherboard Compatibility:	EATX(<330mm) · ATX · Micro ATX · ITX
Expansion	
External 5.25" Drive Bays:	0
Internal 2.5" Drive Bays:	Up to 4
Internal 3.5" Drive Bays:	Up to 2
Expansion Slots:	7
Top Ports:	Power button, LED button, HD Audio, USB 3.0 x 2, Type C
Physical Specifications	
Dimensions (HxWxD)	490x220x460mm / 19.3x8.7x18.1 inches
Weight:	7.63g /16.8lbs
Features	
Tempered Glass Sides Window:	High-quality tempered glass side window allows for clear visuals to inner components
Addressable RGB Light Effects:	ARGB fans are controlled using the LED button. All addressable RGB devices can sync with the motherboard, allowing the motherboard software to control lighting directly.
Available Fan Ports:	3x120mm or 3x140mm fan ports in the front (3x120mm LFO-4412D ARGB fan included) 3x120mm or 2x140mm fan ports on the top 2x120mm fan ports on top of PSU shroud 1x120mm fan port in the rear (1x120mm LFO-4412D ARGB fan included)
Water Cooling:	Supports radiators up to 280/360mm on the top Supports radiators up to 280/360mm in the front
Dust Filters:	Removable (magnetic) dustproof net on the top, dust filter on bottom of chassis.
Power Supply Support:	Bottom mounted ATX Power Supply
Others Features:	Can adjust the video card holder to fit your system needs.



Model	
Model Name	Chroma 410
Model Number	CSAZ-410A
Specifications	
Type	ATX Mid Tower
Color	Black(exterior)/Black(interior)
Side Panel Window	Tempered Glass with rubber mounts
Max CPU Cooler Height	Up to 162mm
Max Video Card Length	Up to 400mm Long Video Card
Power Supply	Not included
Motherboard Compatibility	ATX, Micro ATX
Expansion	
External 5.25" Drive Bays	0
Internal 2.5" Drive Bays	Up to 6
Internal 3.5" Drive Bays	Up to 2
Expansion Slots	7(Horizontal)+2(Vertical)
Top Ports	2xUSB3.0, 2xUSB2.0, HD Audio
Physical Specifications	
Dimensions (HxWxD)	520x205x500mm / 20.5x8.1x19.7 inches
Weight	6.82 kg / 15.0 lbs
Features	
Digital RGB Light Effects	Digital RGB light on the front. All digital RGB light devices controlled by RF Remote (included) or motherboard.
Tempered Glass Side Window	High-quality tempered glass side windows allow for clear visuals to inner components
Available Fan Ports	2x120mm Fan ports on the top 3x120mm or 2x140mm Fan ports in the front (2x120mm Black Fans included) 1x120mm Fan port in the rear (1x120mm PRISMA-Digital RGB Fan included)
Dust Filters	Dustproof PVC Net x2 on bottom of Chassis
Water Cooling	Supports radiators up to 240mm on top / 360mm in front
Isolated Chamber	Power supply is housed inside its own isolated chamber, preventing its heat from affecting other components
Easy Installation Cooler	A pre-cut hole for easy installation of CPU Cooler, eliminating the need to remove the motherboard



Model	
Model Name	Chroma 410
Model Number	CSAZ-410B
Specifications	
Type	ATX Mid Tower
Color	Black(exterior)/Black(interior)
Side Panel Window	Tempered Glass with rubber mounts
Max CPU Cooler Height	Up to 162mm
Max Video Card Length	Up to 400mm Long Video Card
Power Supply	Not included
Motherboard Compatibility	ATX, Micro ATX
Expansion	
External 5.25" Drive Bays	0
Internal 2.5" Drive Bays	Up to 6
Internal 3.5" Drive Bays	Up to 2
Expansion Slots	7(Horizontal)+2(Vertical)
Top Ports	2xUSB3.0, 2xUSB2.0, HD Audio
Physical Specifications	
Dimensions (HxWxD)	520x205x500mm / 20.5x8.1x19.7 inches
Weight	6.82 kg / 15.0 lbs
Features	
Front Panel	Acrylic Side Translucent modeling
Digital RGB Light Effects	Digital RGB light on the front. All digital RGB light devices controlled by RF Remote (included) or motherboard.
Tempered Glass Side Window	High-quality tempered glass side windows allow for clear visuals to inner components
Available Fan Ports	2x120mm Fan ports on the top 3x120mm or 2x140mm Fan ports in the front (2x120mm PRISMA-Digital RGB Fans included) 1x120mm Fan port in the rear (1x120mm Black Fan included)
Dust Filters	Dustproof PVC Net x2 on bottom of Chassis
Water Cooling	Supports radiators up to 240mm on top / 360mm in front
Isolated Chamber	Power supply is housed inside its own isolated chamber, preventing its heat from affecting other components
Easy Installation Cooler	A pre-cut hole for easy installation of CPU Cooler, eliminating the need to remove the motherboard



Model	
Model Name:	Elise
Model Number:	CSAZ-140
Specifications	
Type:	Micro ATX Mid Tower
Color:	Black/Black(interior)
Side Panel Window:	Left side panel: slidable tempered glass panel
Max CPU Cooler Height:	UP to 175mm
Max Video Card Length:	Up to 340mm long video card
Power Supply:	Not included
Motherboard Compatibility:	Micro ATX - ITX
Expansion	
External 5.25" Drive Bays:	0
Internal 2.5" Drive Bays:	Up to 4
Internal 3.5" Drive Bays:	Up to 2
Expansion Slots:	4
Top Ports:	Power button, reset button, HD Audio, USB 3.0 x 2
Physical Specifications	410x220x381 / 16.1x8.7x15 inches
Weight:	5.1kg/11.3 lbs
Features	
Tempered Glass Sides Window:	High-quality tempered glass side window allows for clear visuals to inner components
Addressable RGB Light Effects:	All ARGB light sync. devices connected to the ARGB control board, allowing the reset button or switch to the motherboard software to directly control the ARGB lighting.
Available Fan Ports:	3x120mm or 2x140mm Fan ports in the front 3x120mm or 2x140mm Fan ports on the top 1x120mm Fan port in the rear (1x120mm LFO-2812D addressable RGB fan included)
Water Cooling:	Supports radiators up to 240/280mm on the top Supports radiators up to 240/280mm in the front
Dust Filters:	Removable (magnetic) dustproof net on the top, iron net on bottom of chassis.
Power Supply Support:	Bottom mounted ATX Power Supply
Accessories	Earphone holder x1 Display stand x1



Model	
Model Name:	Elise
Model Number:	CSAZ-140M
Specifications	
Type:	Micro ATX Mid Tower
Color:	Black/Black(interior)
Side Panel Window:	Left side panel: slidable tempered glass panel
Max CPU Cooler Height:	UP to 175mm
Max Video Card Length:	Up to 340mm long video card
Power Supply:	Not included
Motherboard Compatibility:	Micro ATX · ITX
Expansion	
External 5.25" Drive Bays:	0
Internal 2.5" Drive Bays:	Up to 4
Internal 3.5" Drive Bays:	Up to 2
Expansion Slots:	4
Top Ports:	Power button, LED button, HD Audio, USB 3.0 x 2
Physical Specifications	410x220x381 / 16.1x8.7x15 inches
Weight:	5.1kg/11.3 lbs
Features	
Tempered Glass Sides Window:	High-quality tempered glass side window allows for clear visuals to inner components
Addressable RGB Light Effects:	All ARGB light sync. devices connected to the 5pin ARGB control hub, allowing the LED button to directly control the ARGB lighting or switch to the motherboard sync. software to control.
Available Fan Ports:	3x120mm or 2x140mm Fan ports in the front (3xARGB Fan included) 3x120mm or 2x140mm Fan ports on the top 1x120mm Fan port in the rear (1xARGB Fan included)
Water Cooling:	Supports radiators up to 240/280mm on the top Supports radiators up to 240/280mm in the front
Dust Filters:	Removable (magnetic) dustproof net on the top and front, dust filter on bottom of chassis.
Power Supply Support:	Bottom mounted ATX Power Supply
Accessories	Earphone holder x1 Display stand x1



Model

Model Name:	NOIR
Model Number	CSAZ-130

Specifications

Type:	Micro ATX Mid Tower
Color:	Black(exterior)/black(interior)
Side Panel Window:	Left side panel: tempered glass with rubber mounts
Max CPU Cooler Height:	Up to 165mm
Max GPU Length	Up to 300mm long video card
Power Supply Support:	Bottom mounted ATX Power Supply
Motherboard Compatibility:	Micro ATX

Expansion

External 5.25" Drive Bays:	0
Internal 2.5" Drive Bays:	Up to 6
Internal 3.5" Drive Bays:	Up to 2
Expansion Slots:	4
Top Ports:	Power button, LED button, HD Audio, USB 3.0 x 1, USB2.0x2

Physical Specifications

Case Dimension (HxWxD)	397x215x404mm/15.6x8.5x16 inches
Weight:	4.3kg /9.5lbs

Features

Outer Appearance:	High-quality tempered glass side window allows for clear visuals to inner components
Addressable RGB Light Effects:	All ARGB light devices sync with the motherboard, allowing the motherboard software or LED button to directly control the lighting.
Available Fan Ports:	3x120mm fan ports in the front (1 x 120mm LFO-3212D ARGB fan included) 2x120mm or 2x140mm fan ports on the top 1x120mm fan port in the rear(1 x 120mm LFO-3212D ARGB fan included)
Water Cooling:	Supports radiators up to 240mm in the front
Dust Filters	Removable (magnetic) dustproof net on the top, iron net on bottom of chassis.
Power Supply Support:	Bottom mounted ATX Power Supply



Model	
Model Name	LUMINOUS 110
Model Number	CSAZ-110F
Specifications	
Type	Micro ATX Mid Tower
Color	Black(exterior)/black(interior)
Side Panel Window	Left Side panel: Tempered Glass with rubber mounts
Max CPU Cooler Height	Up to 165mm
Max Video Card Length	Up to 300mm long video card
Power Supply	Not Included
Motherboard Compatibility	Micro ATX
Expansion	
External 5.25" Drive Bays	0
Internal 2.5" Drive Bays	Up to 6
Internal 3.5" Drive Bays	Up to 2
Expansion Slots	4
Top Ports	Power button, LED button, HD Audio, USB 3.0 x 1, USB2.0 x2
Physical Specifications	
Case Dimension (HxWxD)	397x209x435mm/15.6x8.2x17.1 inches
Weight	4.3kg /9.5lbs
Features	
Tempered Glass Sides Window	High-quality tempered glass side window allows for clear visuals to inner components
RGB Light Effects	RGB AZZA logo on the front panel and controlled by the LED button on the top of front panel.
Available Fan Ports	3x120mm Fan ports in the front 2x120mm Fan ports on the top 1x120mm Fan port in the rear (1 x 120mm Black Fan included for model CSAZ-110F only)
Water Cooling	Supports radiators up to 240mm in the Front
Dust filters	Removable (magnetic) dustproof net on the top, iron net on bottom of chassis.
Power Supply Support	Bottom mounted ATX Power Supply



Model	
Model Name:	Xander
Model Number:	CSAZ-150
Specifications	
Type:	Micro ATX Mid Tower
Color:	Black/Black(interior)
Side Panel Window:	Left side panel: slidable tempered glass panel
Max CPU Cooler Height:	Up to 175mm
Max Video Card Length:	Up to 340mm long video card
Power Supply:	Not included
Motherboard Compatibility:	Micro ATX · ITX
Expansion	
External 5.25" Drive Bays:	0
Internal 2.5" Drive Bays:	Up to 4
Internal 3.5" Drive Bays:	Up to 2
Expansion Slots:	4
Top Ports:	Power button, LED button, HD Audio, USB 3.0 x 2
Physical Specifications	410x220x381 / 16.1x8.7x15 inches
Weight:	5.6kg /12.3lbs
Features	
Tempered Glass Sides Window:	High-quality tempered glass side window allows for clear visuals to inner components
Addressable RGB Light Effects:	All ARGB light sync. devices connected to the ARGB control board, allowing the LED button or switch to the motherboard software to directly control the ARGB lighting.
Available Fan Ports:	3x120mm or 2x140mm Fan ports in the front(2x120mm LFO-4412D ARGB fan included) 3x120mm or 2x140mm Fan ports on the top 1x120mm Fan port in the rear(1x120mm LFO-4412D ARGB fan included)
Water Cooling:	Supports radiators up to 240/280mm on the top Supports radiators up to 240/280mm in the front
Dust Filters:	Removable (magnetic) dustproof net on the top and front, dust filter on bottom of chassis.
Power Supply Support:	Bottom mounted ATX Power Supply

AZZA 550W 80+ BRONZE POWER SUPPLY



Model	AC Input	200V-240V AC, 50-60Hz, 8A Max.					100-240V AC, 50-60Hz, 8A Max					Total Max Output Power
	DC Output	+3.3V	+5V	+12V	-12V	+5VSB	+3.3V	+5V	+12V	-12V	+5VSB	
AD-Z550	Max. Output Current	15A	15A	45A	0.3A	2.5A	15A	15A	45A	0.3A	2.5A	550W
	Max. combined Output power	100W		540W	3.6W	12.5W	100W		540W	3.6W	12.5W	

PSAZ-550W

AZZA 650W 80+ BRONZE POWER SUPPLY



200-240V

Model	AC Input	200-240V~ 50-60Hz 10A Max.					Total Max Output Power
	DC Output	+5V	+3.3V	+12V	-12V	+5Vsb	
PSAZ-650B	Max. Output Current	15A	15A	54A	0.3A	2.5A	650W
	Max. combined Output power	100W		648W	3.6W	12.5W	

100-240V



Model	AC Input	100-240V AC, 50-60Hz, 10A Max.					Total Max Output Power
	DC Output	+3.3V	+5V	+12V	-12V	+5VSB	
AD-Z650	Max. Output Current	15A	15A	54A	0.3A	2.5A	650W
	Max. combined Output power	100W		648W	3.6W	12.5W	

PSAZ-650W

AZZA 650W ARGB 80+ BRONZE POWER SUPPLY



200-240V

100-240V



Model	AC Input	200-240V~ 50-60Hz 10A Max.					Total Max Output Power
	DC Output	+5V	+3.3V	+12V	-12V	+5Vsb	
PSAZ-650B	Max. Output Current	15A	15A	54A	0.3A	2.5A	650W
	Max.combined Output power	100W		648W	3.6W	12.5W	

Model	AC Input	100-240V AC, 50-60Hz, 10A Max.					Total Max Output Power
	DC Output	+3.3V	+5V	+12V	-12V	+5VSB	
AD-Z650 (Digital RGB)	Max. Output Current	15A	15A	54A	0.3A	2.5A	650W
	Max.combined Output power	100W		648W	3.6W	12.5W	

PSAZ-650W

AZZA 750W 80+ BRONZE POWER SUPPLY



Model	AC Input	200-240V AC, 50-60Hz, 10A Max					100-240V AC, 50-60Hz, 10A Max.					Total Max Output Power
	DC Output	+3.3V	+5V	+12V	-12V	+5VSB	+3.3V	+5V	+12V	-12V	+5VSB	
PSAZ-750W	Max. Output Current	15A	15A	62A	0.3A	2.5A	15A	15A	62A	0.3A	2.5A	750W
	Max.combined Output power	100W		744W	3.6W	12.5W	100W		744W	3.6W	12.5W	

PSAZ-750W

AZZA 750W ARGB 80+ BRONZE POWER SUPPLY



Model	AC Input	200-240V AC, 50-60Hz, 10A Max					100-240V AC, 50-60Hz, 10A Max.					Total Max Output Power
	DC Output	+3.3V	+5V	+12V	-12V	+5VSB	+3.3V	+5V	+12V	-12V	+5VSB	
PSAZ-750W	Max. Output Current	15A	15A	62A	0.3A	2.5A	15A	15A	62A	0.3A	2.5A	750W
	Max.combined Output power	100W		744W	3.6W	12.5W	100W		744W	3.6W	12.5W	

PSAZ-750W

AZZA 750W 80+ GOLD POWER SUPPLY



PSAZ-750G	750W GOLD					
AC Input	100-240V AC, 50-60Hz, 10A Max.					Total Max.
DC Output	+3.3V	+5V	+12V	-12V	+5VSB	Output Power
Max. Output Current	20A	20A	62A	0.3A	2.5A	750W
Max.combined Output power	100W		744W	3.6W	12.5W	

PSAZ-750G

AZZA 850W 80+ GOLD POWER SUPPLY



PSAZ-850G14	850W GOLD					
AC Input	100-240V AC,50-60Hz,10A Max.					Total Max.
DC Output	+3.3V	+5V	+12V	-12V	+5VSB	Output Power
Max. Output Current	20A	20A	70A	0.3A	2.5A	850W
Max.combined Output power	100W		840W	3.6W	12.5W	

PSAZ-850G14

PSAZ-750G GEN5,80+ GOLD POWER SUPPLY



PSAZ-750G	750W GOLD				
AC Input	100-240Vac 50-60Hz 10A Max				
DC Output Voltage	+12V	+5V	+3.3V	-12V	+5Vsb
Max Output Current	62A	20A	20A	0.3A	2.5A
Combined Power	744W	100W		3.6W	12.5W
Total Power	750W				

**PSAZ-850G, GEN5, 80+ GOLD
POWER SUPPLY**



PSAZ-850G	850W GOLD				
AC Input	100-240Vac 50-60Hz 10A Max				
DC Output Voltage	+12V	+5V	+3.3V	-12V	+5Vsb
Max Output Current	70.8A	20A	20A	0.3A	2.5A
Combined Power	840W	120W		3.6W	12.5W
Total Power	850W				


**PSAZ-1000P, GEN 5, 80+ PLATINUM
POWER SUPPLY**



PSAZ-1000P	1000W PLATINUM				
AC Input	100-240VAC, 12-6A, 50-60Hz				
DC Output Voltage	+12V	+5V	+3.3V	-12V	+5Vsb
Max Output Current	83A	20A	20A	0.3A	3A
Combined Power	996W	120W		3.6W	15W
Total Power	1000W				

HURRICANE II



Model Name	Hurricane II Digital RGB
Model Number	FNAZ-12DRGB2-011 / FNAZ-12DRGB2-211 (Include RF Remote)
Rating Voltage	DC12V(Fan) 5V(LED)
Rated Current	Max: 216mA(Fan); Max:400mA(LED)
Fan Speed	1000-1800 RPM
Max.Air Pressure	1.79mmH20
Max.Air Flow	43.06CFM
Max Noise Level	29.0dB(A)
Bearing Type	Hydro Bearing
Life Expectancy	100000 hrs,25°C
Connector	4PIN PWM
	5V,3pin WS2812B Addressable RGB Header: Male & Female
Fan Dimensions	120x120x25mm
Weight	0.15 kg
RF Remote Controller	 x1

※ Sync-compatible with all major +5V motherboard technologies, such as ASUS™ Aura, ASRock™ RGB Sync, MSI™ Mystic Light, and Gigabyte™ RGB Fusion.


HURRICANE III



Mode Name	HURRICANE III DIGITAL RGB FAN
Mode Number	FNAZ-12DRGB3-011
Rated Voltage	DC12V(Fan) 5V(LED)
Fan Speed	1000-1800±10% RPM
Max.Air Pressure	1.91mmH20
Max.Air Flow	49.1CFM
Max Noise Level	26.29 dB(A)
Bearing Type	Hydro Bearing
Life Expectancy	20000 hrs,25°C
Connector	4 PIN PWM
	5V,3pin WS2812B Addressable RGB Header:Male& Female
Fan Dimensions	120x120x25mm
Weight	0.18kg

※ Sync-compatible with all major +5V motherboard technologies, such as ASUS™ Aura, ASRock™ RGB Sync, MSI™ Mystic Light, and Gigabyte™ RGB Fusion.

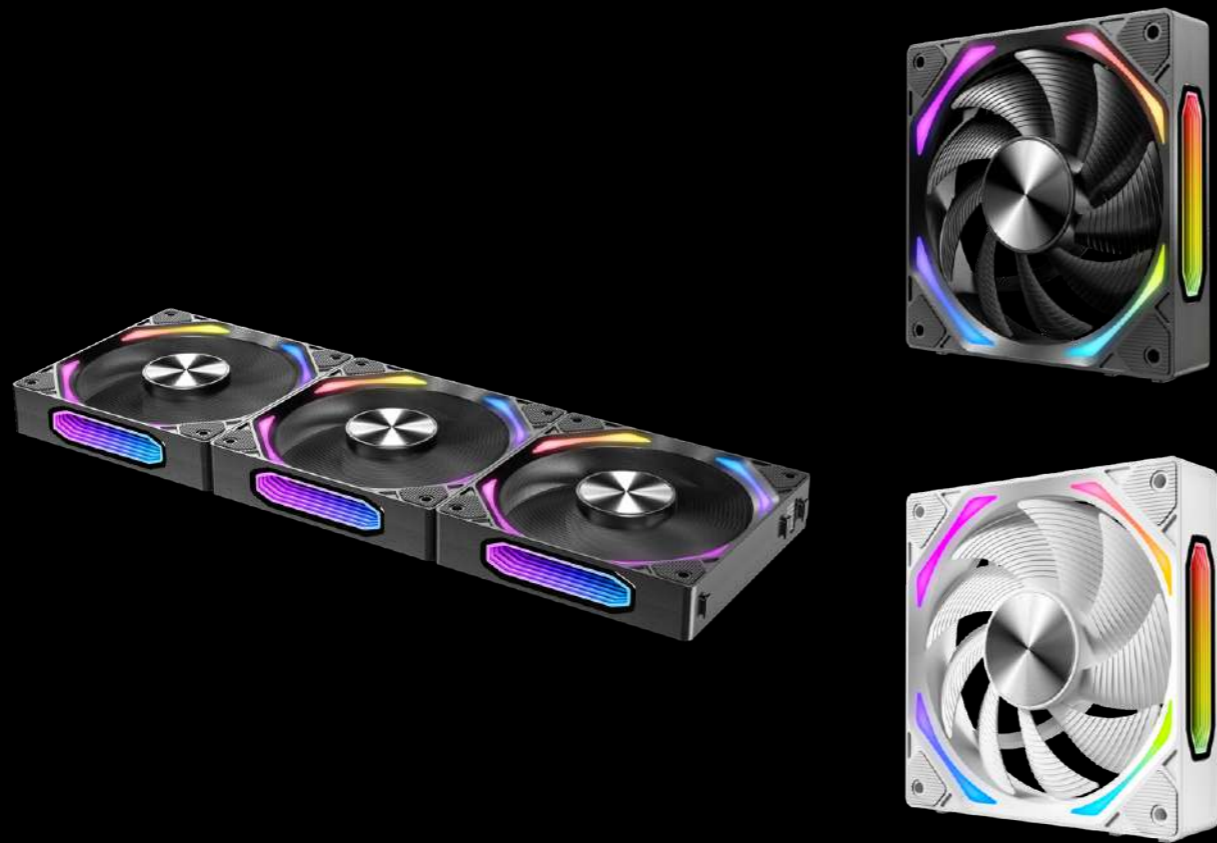


Mode Name	HURRICANE III DIGITAL RGB FAN
Mode Number	FNAZ-12DRGB3-341 (HUB included)
Rated Voltage	DC12V(Fan) 5V(LED)
Fan Speed	1000-1800±10% RPM
Max.Air Pressure	1.91mmH2O
Max.Air Flow	49.1CFM
Max Noise Level	26.29 dB(A)
Bearing Type	Hydro Bearing
Life Expectancy	20000 hrs,25°C
Connector	4 PIN PWM
	5V,3pin WS2812B Addressable RGB Header:Male& Female
Fan Dimensions	120x120x25mm
Weight	0.8 kg
HUB Controller	 X1

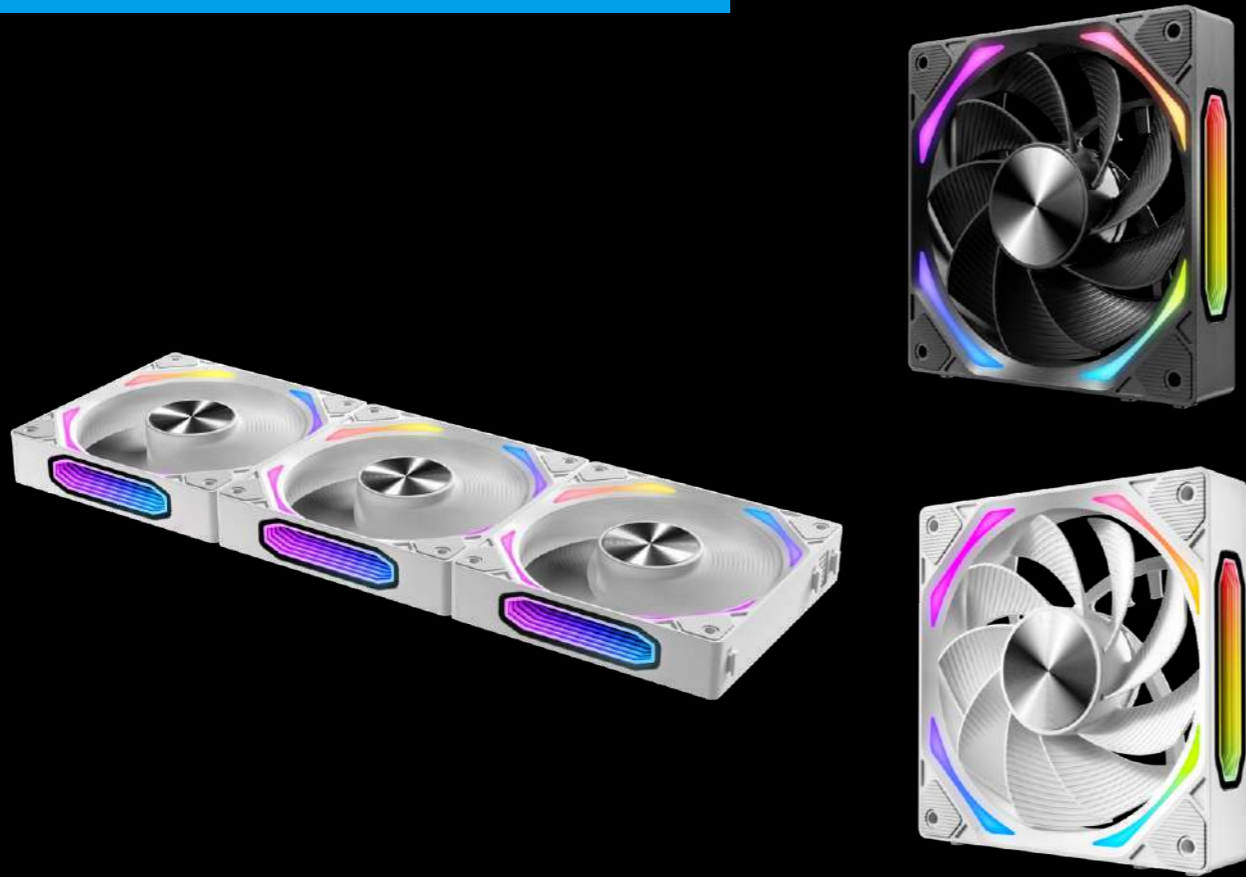
※ Sync-compatible with all major +5V motherboard technologies, such as ASUS™ Aura, ASRock™ RGB Sync, MSI™ Mystic Light, and Gigabyte™ RGB Fusion.



Mode Name	Pro Fan
Mode Number	FNAZ-12DRGB5-011
Rated Voltage	DC12V(Fan) 5V(LED)
Fan Speed	500-2000 rpm±10%
Max.Air Pressure	1.8mmH2O
Max.Air Flow	57.5CFM
Max Noise Level	34 dB (A)
Bearing Type	Hydro Bearing
Life Expectancy	20000 hours at 25°C
Connector	4 PIN PWM
	5V,3pin Addressable RGB Header:Male& Female
Fan Dimensions	120x120x25mm
Weight	0.15kg



Model Name	Galaxy
Model	LFO-4912DB3/LFO-4912DW3
Fan Size	120x120x25mm
Bearing system	Hydraulic Bearing
Ratef Voltage	DC 12V
ARGB Ratef Voltage	DC 5V
Speed Mode(PWM)	500±200~1800±10%RPM
Airflow	41.1CFM
Air Presuure	1.5mmH20
Noise	26.1db(A)



Model Name	Galaxy
Model	LFO-4912DBR3/LFO-4912DWR3
Fan Size	120x120x25mm
Bearing system	Hydraulic Bearing
Ratef Voltage	DC 12V
ARGB Ratef Voltage	DC 5V
Speed Mode(PWM)	500±200~1800±10%RPM
Airflow	44.7CFM
Air Presuure	1.3mmH20
Noise	30.4db(A)



Model Name		Blizzard
Model No.		LCAZ-120R-ARGB
Fan	Dimensions	120 x 120 x 25mm
	Type	PWM(4pin)ARGB LED Fan
	Speed	1000-1800rpm±10%
	Bearing Type	Hydro Bearing
	Airflow	49.1CFM
	Air Pressure	1.91mmH2O
	Noise	26.29db (A)
	Lifespan	20000 hours at 25°C
Radiator	ARGB Connector	5V,3pin ARGB Male & Female Header
	Dimensions	154x120x27mm
Pump	Material	Aluminum
	Dimensions	78.4x87.9x52.9mm
	Connector	3 pin(DC12V) + ARGB Connector
	Speed	2,600 rpm
	Water Pressure	1.8m
	Flow rate	1.5 L/min
	Lifespan	40000H
Noise	≤ 27.3 dB (A)	
Tube	Dimensions	321 mm
Socket Compatibility	Intel Socket	LGA 2066 / 2011-V3 / LGA2011 / LGA1366 / LGA1200 / LGA1156 / 1155 / 1151 / 1150 / 775
	AMD Socket	AM4 / AM3+ / AM3 / AM2+ / AM2 / FM2+ / FM2 / FM1



Model Name		Blizzard
Model No.		LCAZ-240R-ARGB
Fan	Dimensions	120 x 120 x 25mm
	Type	PWM(4pin) ARGB LED Fan
	Speed	1000-1800rpm±10%
	Bearing Type	Hydro Bearing
	Airflow	49.1CFM
	Air Pressure	1.91mmH2O
	Noise	26.29db (A)
	Lifespan	20000 hours at 25°C
ARGB Connector	5V, 3pin ARGB Male & Female Header	
Radiator	Dimensions	274x120x27mm
	Material	Aluminum
Pump	Dimensions	78.4x87.9x52.9mm
	Connector	3 pin(DC12V) + ARGB Connector
	Speed	2,600 rpm
	Water Pressure	1.8m
	Flow rate	1.5L / min
	Lifespan	40000H
	Noise	≤ 27.3 dB (A)
Tube	Dimensions	400mm
Socket Compatibility	Intel Socket	LGA 2066 / 2011-V3 / LGA2011 / LGA1366/ LGA1200/ LGA1156 / 1155 / 1151 / 1150 / 775
	AMD Socket	AM4 / AM3+ / AM3 / AM2+ / AM2 / FM2+ / FM2 / FM1



Model Name		Blizzard
Model No.		LCAZ-360R-ARGB
Fan	Dimensions	120 x 120 x 25mm
	Type	PWM(4pin) ARGB LED Fan
	Speed	1000-1800rpm±10%
	Bearing Type	Hydro Bearing
	Airflow	49.1CFM
	Air Pressure	1.91mmH2O
	Noise	26.29db (A)
	Lifespan	20000 hours at 25°C
ARGB Connector		5V,3pin ARGB Male & Female Header
Radiator	Dimensions	394x120x27mm
	Material	Aluminum
Pump	Dimensions	78.4x87.9x52.9 mm
	Connector	3 pin(DC12V) +ARGB Connector
	Speed	2,600 rpm
	Water Pressure	1.8m
	Flow rate	1.5L/min
	Lifespan	40000H
Noise		≤ 27.3 dB (A)
Tube	Dimensions	400mm
Socket Compatibility	Intel Socket	LGA 2066 / 2011-V3 / LGA2011 / LGA1366/ LGA1200/ LGA1156 / 1155 / 1154 / 1150 / 775
	AMD Socket	AM4 / AM3+ / AM3 / AM2+ / AM2 / FM2+ / FM2 / FM1



Model Name		Blizzard SP 240
Model No.		LCAZ-240R-ARGB SP
Fan	Dimensions	120 x 120 x 25mm
	Type	PWM(4pin) ARGB LED Fan
	Speed	700-2200rpm±10%
	Bearing Type	Hydro Bearing
	Airflow	62.1CFM
	Air Pressure	3.1mmH2O
	Noise	36db (A)
	Lifespan	20000 hours at 25° C
ARGB Connector		5V, 3pin ARGB Male & Female Header
Radiator	Dimensions	274x120x27mm
	Material	Aluminum alloy
Pump	Dimensions	71.5 x82.3x52.3mm
	Connector	3 pin(DC12V) + ARGB 5V, 3pin Male & Female Header
	Bearing type	Zirconia ceramics
	Speed	3200rpm±10%
	Water Pressure	1.5 mH ₂ O
	Flow rate	156L/h
	Motor Type	3-Phases brushless DC motor
	Lifespan	50000H
Noise	≤ 25 dB (A)	
Tube	Dimensions	400mm
	Material	EPDM-Rayon mesh
Socket Compatibility	Intel Socket	LGA2066/LGA2011/LGA2011-V3/LGA1700/LGA1800 /LGA1366/LGA1200/LGA1150/LGA1151/LGA1155/LGA1156
	AMD Socket	AM4/AM3+/AM3/AM2+/AM2/FM2+/FM2/FM1/TR4/TRX4
ARGB Controller		YES
PWM Y-Cable		YES



Model Name		Blizzard SP 360
Model No.		LCAZ-360R-ARGB SP
Fan	Dimensions	120 x 120 x 25mm
	Type	PWM(4pin) ARGB LED Fan
	Speed	700-2200rpm±10%
	Bearing Type	Hydro Bearing
	Airflow	62.1CFM
	Air Pressure	3.1mmH ₂ O
	Noise	36db (A)
	Lifespan	20000 hours at 25° C
ARGB Connector		5V, 3pin ARGB Male & Female Header
Radiator	Dimensions	394x120x27mm
	Material	Aluminum alloy
Pump	Dimensions	71.5 x 82.3 x 52.3mm
	Connector	3 pin(DC12V) + ARGB 5V, 3pin Male & Female Header
	Bearing type	Zirconia ceramics
	Speed	3200rpm±10%
	Water Pressure	1.5mH ₂ O
	Flow rate	156L/h
	Motor Type	3-Phases brushless DC motor
	Lifespan	50000H
Noise	≤ 25 dB (A)	
Tube	Dimensions	400mm
	Material	EPDM+Rayon mesh
Socket Compatibility	Intel Socket	LGA2066/LGA2011/LGA2011-V3/LGA1700/LGA1800/LGA1366/LGA1200/LGA1150/LGA1151/LGA1155/LGA1156
	AMD Socket	AM4/AM3+/AM3/AM2+/AM2/FM2+/FM2/FM1/TR4/TRX4
ARGB Controller		YES
PWM Y-Cable		YES



Model Name		Galeforce
Model No.		LCAZ-120C-ARGB
Fan	Dimensions	120 x 120 x 25mm
	Type	PWM(4pin) ARGB LED Fan
	Speed	800-1800rpm±10%
	Bearing Type	Hydraulic Bearing
	Airflow	75.5CFM
	Air Pressure	2.35mmH2O
	Noise	36.5db (A)
	Lifespan	30000 hours at 25°C
	ARGB Connector	5V,3pin ARGB Male & Female Header
Radiator	Dimensions	157x120x27mm
	Material	Aluminum
Pump	Dimensions	70x81,5x52,9mm
	Connector	3 pin(DC12V) + ARGB Connector
	Speed	2600rpm±10%
	Water Pressure	1.8m
	Flow rate	1.5 L/min
	Lifespan	40000H
	Noise	≤ 27,3 dB (A)
Tube	Dimensions	400 mm
Socket Compatibility	Intel Socket	LGA 2066 / 2011-V3 / LGA2011 / LGA1366 / LGA1200/ LGA1156 / 1155 / 1151 / 1150 / 1700 / 1851
	AMD Socket	AM5 / AM4 / AM3+ / AM3 / AM2+ / AM2 / FM2+ / FM2 / FM1



Model Name		Galeforce
Model No.		LCAZ-240C-ARGB
Fan	Dimensions	120 x 120 x 25mm
	Type	PWM(4pin) ARGB LED Fan
	Speed	800-1800rpm±10%
	Bearing Type	Hydraulic Bearing
	Airflow	75.5CFM
	Air Pressure	2.35mmH2O
	Noise	36.5db (A)
	Lifespan	30000 hours at 25°C
Radiator	ARGB Connector	5V,3pin ARGB Male & Female Header
	Dimensions	277x120x27mm
Pump	Material	Aluminum
	Dimensions	70x81.5x52.9mm
	Connector	3 pin(DC12V) + ARGB Connector
	Speed	2600rpm±10%
	Water Pressure	1.8m
	Flow rate	1.5 L/min
	Lifespan	40000H
Noise	≤ 27.3 dB (A)	
Tube	Dimensions	400 mm
Socket Compatibility	Intel Socket	LGA 2066 / 2011-V3 / LGA2011 / LGA1366 / LGA1200 / LGA1156 / 1155 / 1151 / 1150 / 1700 / 1851
	AMD Socket	AM5/AM4 / AM3+ / AM3 / AM2+ / AM2 / FM2+ / FM2 / FM1



Model Name		Galeforce
Model No.		LCAZ-360C-ARGB
Fan	Dimensions	120 x 120 x 25mm
	Type	PWM(4pin) ARGB LED Fan
	Speed	800-1800 rpm±10%
	Bearing Type	Hydraulic Bearing
	Airflow	75.5CFM
	Air Pressure	2.35mmH2O
	Noise	36.5db (A)
	Lifespan	30000 hours at 25°C
	ARGB Connector	5V, 3pin ARGB Male & Female Header
Radiator	Dimensions	397x120x27mm
	Material	Aluminum
Pump	Dimensions	70x81.5x52.9mm
	Connector	3 pin(DC12V) + ARGB Connector
	Speed	2,600rpm
	Water Pressure	1.8m
	Flow rate	1.5L/min
	Lifespan	40000H
	Noise	≤ 27.3 dB (A)
Tube	Dimensions	400mm
Socket Compatibility	Intel Socket	LGA 2066 / 2011-V3 / LGA2011 / LGA1366 / LGA1200/ LGA1156 / 1155 / 1151 / 1150 / 1700 / 1851
	AMD Socket	AM5 / AM4 / AM3+ / AM3 / AM2+ / AM2 / FM2+ / FM2 / FM1



Model Name		AZZA BLIZZARD PRO 240
Model No.		LCAZ-240R-ARGB PRO
Fan	Dimensions	120 x 120 x 25mm
	Speed	500-2000 rpm±10%
	Bearing Type	Hydro Bearing
	Airflow	57.5CFM
	Air Pressure	1.8mmH2O
	Noise	34 dB (A)
	Lifespan	20000 hours at 25°C
	ARGB Connector	SM2.54-3Pin(Female) to SM2.54-3Pin(Male)
Power Connector	2510-4Pin(Female) to 2510-4Pin(Male)	
Radiator	Dimensions	274x121x27mm
	Material	Aluminum alloy
Pump	Dimensions	71.5x82.3x52.3mm
	Connector	2510-3Pin(PUMP) /SM2.54-3Pin (Lights)
	Bearing type	Copper alloy powder metallurgy
	Speed	2700rpm±10%
	Water Pressure	1.3mH2O
	Flow rate	88.3 L/h
	Motor Type	3-Phases brushless DC motor
	Lifespan	50000 H
Noise	≤ 25 dB (A)	
Tube	Dimensions	400mm
	Material	EPDM+Rayon mesh
Socket Compatibility	Intel Socket	LGA115X/LGA1366/LGA1200/LGA1700/LGA1800
	AMD Socket	AM5/AM4/AM3+/AM3/AM2+/AM2/FM2+/FM2/FM1



Model Name		AZZA BLIZZARD PRO 360
Model No.		LCAZ-360R-ARGB PRO
Fan	Dimensions	120 x 120 x 25mm
	Speed	500-2000rpm±10%
	Bearing Type	Hydro Bearing
	Airflow	57.5CFM
	Air Pressure	1.8mmH2O
	Noise	34 dB (A)
	Lifespan	20000 hours at 25°C
	ARGB Connector	SM2.54-3Pin(Female) to SM2.54-3Pin(Male)
Power Connector		2510-4Pin(Female) to 2510-4Pin(Male)
Radiator	Dimensions	394x121x27mm
	Material	Aluminum alloy
Pump	Dimensions	71.5x82.3x52.3mm
	Connector	2510-3Pin(PUMP) /SM2.54-3Pin (Lights)
	Bearing type	Copper alloy powder metallurgy
	Speed	2700rpm±10%
	Water Pressure	1.3mH2O
	Flow rate	88.3 L/h
	Motor Type	3-Phases brushless DC motor
	Lifespan	50000 H
	Noise	≤ 25 dB (A)
Tube	Dimensions	400mm
	Material	EPDM+Rayon mesh
Socket Compatibility	Intel Socket	LGA115X/LGA1366/LGA1200/LGA1700/LGA1800
	AMD Socket	AM5/AM4/AM3+/AM3/AM2+/AM2/FM2+/FM2/FM1



Model Name		AZZA CUBE 240
Model No.		LCAZ-240P-ARGB CUBE
Fan	Dimensions	120 x 120 x 25mm
	Speed	500-2000±10% RPM
	Bearing Type	Hydro Bearing
	Rating voltage(Fan)	DC 12.0V
	Rating current(Fan)	0.28A
	Power consumption(Fan)	3.36W
	Rating voltage(Lights)	DC 5.0V
	Rating current(Lights)	0.36A(Max)
	Power consumption(Lights)	1.8W
	Airflow	57.5CFM
	Air Presuure	1.8mmH2O
	Noise	34 dB (A)
	Lifespan	20000 hours at 25°C
	ARGB Connector	SM2.54-3Pin(Female) to SM2.54-3Pin(Male)
Power Connector	2510-4Pin(Female) to 2510-4Pin(Male)	
Radiator	Dimensions	284.0x121x35.0mm
	Material	Aluminium alloy
Water Block	Dimensions	70.0x85.0x78.5mm
	ARGB Connector	5V ADD-HEADER(Female) to ADD-HEADER(Male)
	Rating voltage(Lights)	DC 5.0V
	Rating current(Lights)	0.72A(Max)
	Power consumption(Lights)	3.6W

Pump	Pump Type	Radiator built-in pump
	Connector	2510-3Pin
	Bearing type	Zirconia ceramic bearings
	Rating voltage	DC 12.0V
	Rating current	0.38A
	Power consumption	4.56W
	Speed	4000±10% RPM
	Water Pressure	1.5 mH2O
	Flow Rate	96 L/h
	Motor Type	3-Phases brushless DC motor
Tube	Lifespan	50000h
	Noise	< 25dB (A)
Socket Compatibility	Dimensions	400mm
	Material	EPDM+Rayon mesh
Socket Compatibility	Intel Socket	LGA 115X/LGA 1366/LGA 1200/LGA 1700/LGA 1851
	AMD Socket	AM5/AM4/AM3+/AM3/AM2+/AM2/FM2+/FM2/FM1



Model Name		AZZA CUBE 360
Model No.		LCAZ-360P-ARGB CUBE
Fan	Dimensions	120 x 120 x 25mm
	Speed	500-2000±10% RPM
	Bearing Type	Hydro Bearing
	Rating voltage(Fan)	DC 12.0V
	Rating current(Fan)	0.28A
	Power consumption(Fan)	3.36W
	Rating voltage(Lights)	DC 5.0V
	Rating current(Lights)	0.36A(Max)
	Power consumption(Lights)	1.8W
	Airflow	57.5CFM
	Air Pressure	1.8mmH2O
	Noise	34 dB (A)
	Lifespan	20000 hours at 25°C
	ARGB Connector	SM2.54-3Pin(Female) to SM2.54-3Pin(Male)
Power Connector	2510-4Pin(Female) to 2510-4Pin(Male)	
Radiator	Dimensions	404.0x121x35.0mm
	Material	Aluminium alloy
Water Block	Dimensions	70.0x85.0x78.5mm
	ARGB Connector	5V ADD-HEADER(Female) to ADD-HEADER(Male)
	Rating voltage(Lights)	DC 5.0V
	Rating current(Lights)	0.72A(Max)
	Power consumption(Lights)	3.6W

Pump	Pump Type	Radiator built-in pump
	Connector	2510-3Pin
	Bearing type	Zirconia ceramic bearings
	Rating voltage	DC 12.0V
	Rating current	0.38A
	Power consumption	4.56W
	Speed	4000±10% RPM
	Water Pressure	1.5 mH2O
	Flow Rate	96 L/h
	Motor Type	3-Phases brushless DC motor
Tube	Lifespan	50000h
	Noise	<25dB (A)
	Dimensions	400mm
	Material	EPDM+Rayon mesh
Socket Compatibility	Intel Socket	LGA115X/LGA1366/LGA1200/LGA1700/LGA1851
	AMD Socket	AM5/AM4/AM3+/AM3/AM2+/AM2/FM2+/FM2/FM1



Model Name		Hex 240
Model No.		LCAZ-240H-ARGB
Fan	Dimensions	120 x 120 x 25mm
	Speed	500±100~2000±10% RPM
	Bearing Type	Hydro Bearing
	Rating voltage(Fan)	DC 12.0V
	Rating current(Fan)	0.28A
	Power consumption(Fan)	3.36W
	Rating voltage(Lights)	DC 5.0V
	Rating current(Lights)	0.36A(Max)
	Power consumption(Lights)	1.8W
	Airflow	57.5CFM
	Air Pressure	1.8mmH2O
	Noise	34 dB (A)
	Lifespan	20000 hours at 25°C
	ARGB Connector	SM2.54-3Pin(Female) to SM2.54-3Pin(Male)
Power Connector	2510-4Pin(Female) to 2510-4Pin(Male)	
Radiator	Dimensions	286x121x35.0mm
	Material	Aluminium alloy
Water Block	Dimensions	71.5x82.3x52.3mm
	ARGB Connector	5V ADD-HEADER(Female) to ADD-HEADER(Male)
	Rating voltage(Lights)	DC 5.0V
	Rating current(Lights)	0.72A(Max)
	Power consumption(Lights)	3.6W

Pump	Pump Type	Radiator built-in pump
	Connector	2510-3Pin
	Bearing type	Zirconia ceramic bearings
	Rating voltage	DC 12.0V
	Rating current	0.4A
	Power consumption	4.8W
	Speed	4000±10% RPM
	Water Pressure	1.3 mH2O
	Flow Rate	120 L/h
	Motor Type	3-Phases brushless DC motor
Tube	Lifespan	50000h
	Noise	< 25dB(A)
	Dimensions	400mm
Socket Compatibility	Material	EPDM+Rayon mesh
	Intel Socket	LGA 115X/LGA 1366/LGA 1200/LGA 1700/LGA 1851
	AMD Socket	AM5/AM4/AM3+/AM3/AM2+/AM2/FM2+/FM2/FM1



Model Name		Hex 360
Model No.		LCAZ-360H-ARGB
Fan	Dimensions	120 x 120 x 25mm
	Speed	500±100~2000±10% RPM
	Bearing Type	Hydro Bearing
	Rating voltage(Fan)	DC 12.0V
	Rating current(Fan)	0.28A
	Power consumption(Fan)	3.36W
	Rating voltage(Lights)	DC 5.0V
	Rating current(Lights)	0.36A(Max)
	Power consumption(Lights)	1.8W
	Airflow	57.5CFM
	Air Pressure	1.8mmH2O
	Noise	34 dB (A)
	Lifespan	20000 hours at 25°C
	ARGB Connector	SM2.54-3Pin(Female) to SM2.54-3Pin(Male)
Power Connector	2510-4Pin(Female) to 2510-4Pin(Male)	
Radiator	Dimensions	406x121x35.0mm
	Material	Aluminium alloy
Water Block	Dimensions	71.5x82.3x52.3mm
	ARGB Connector	5V ADD-HEADER(Female) to ADD-HEADER(Male)
	Rating voltage(Lights)	DC 5.0V
	Rating current(Lights)	0.72A(Max)
	Power consumption(Lights)	3.6W

Pump	Pump Type	Radiator built-in pump
	Connector	2510-3Pin
	Bearing type	Zirconia ceramic bearings
	Rating voltage	DC 12.0V
	Rating current	0.4A
	Power consumption	4.8W
	Speed	4000±10% RPM
	Water Pressure	1.3 mH2O
	Flow Rate	120 L/h
	Motor Type	3-Phases brushless DC motor
Tube	Lifespan	50000h
	Noise	< 25dB(A)
	Dimensions	400mm
Socket Compatibility	Material	EPDM+Rayon mesh
	Intel Socket	LGA115X/LGA1366/LGA1200/LGA1700/LGA1851
	AMD Socket	AM5/AM4/AM3+/AM3/AM2+/AM2/FM2+/FM2/FM1



Model Name		Pyramid 240
Model No.		LCAZ-240Y-ARGB
Fan	Dimensions	120 x 120 x 25mm
	Speed	500±100~2000±10% RPM
	Bearing Type	Hydro Bearing
	Rating voltage(Fan)	DC 12.0V
	Rating current(Fan)	0.28A
	Power consumption(Fan)	3.36W
	Rating voltage(Lights)	DC 5.0V
	Rating current(Lights)	0.36A(Max)
	Power consumption(Lights)	1.8W
	Airflow	57.5CFM
	Air Pressure	1.8mmH2O
	Noise	34 dB (A)
	Lifespan	20000 hours at 25°C
	ARGB Connector	SM2.54-3Pin(Female) to SM2.54-3Pin(Male)
Power Connector	2510-4Pin(Female) to 2510-4Pin(Male)	
Radiator	Dimensions	284x121x35.0mm
	Material	Aluminium alloy
Water Block	Dimensions	70.0x85.0x78.5mm
	ARGB Connector	5V ADD-HEADER(Female) to ADD-HEADER(Male)
	Rating voltage(Lights)	DC 5.0V
	Rating current(Lights)	0.72A(Max)
	Power consumption(Lights)	3.6W

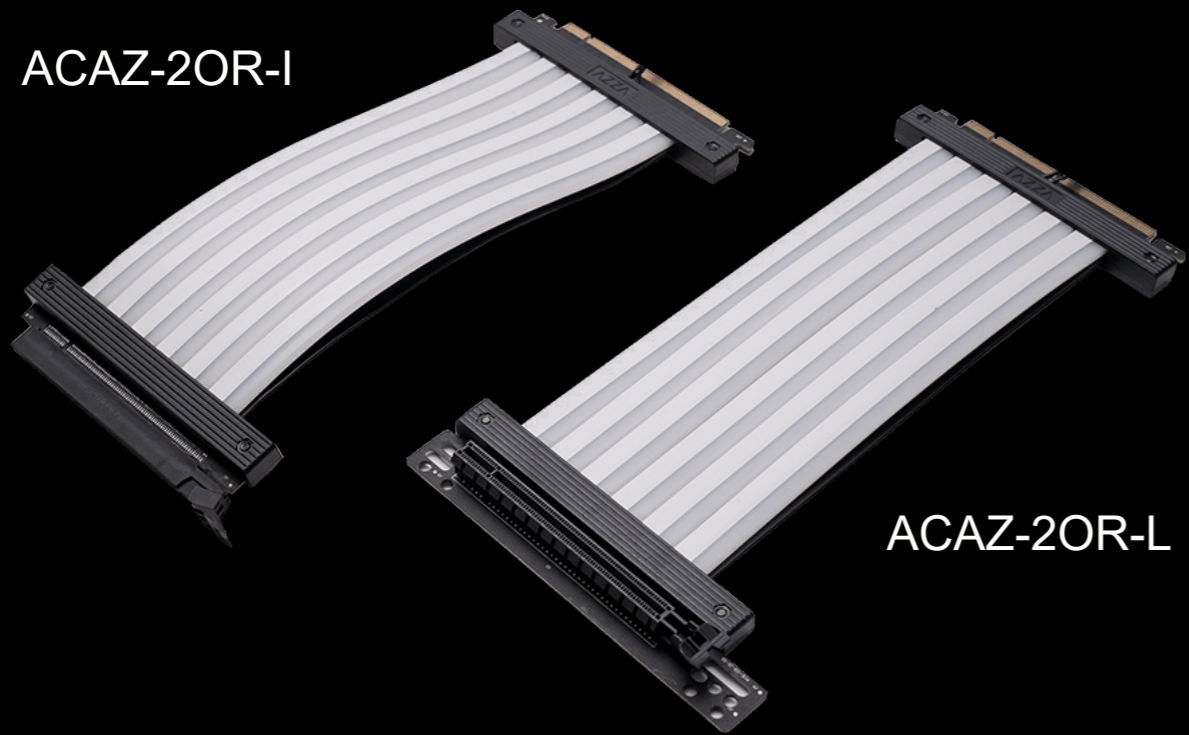
Pump	Pump Type	Radiator built-in pump
	Connector	2510-3Pin
	Bearing type	Zirconia ceramic bearings
	Rating voltage	DC 12.0V
	Rating current	0.38A
	Power consumption	4.56W
	Speed	4000±10% RPM
	Water Pressure	1.5 mH2O
	Flow Rate	96 L/h
	Motor Type	3-Phases brushless DC motor
Tube	Lifespan	50000h
	Noise	< 25dB(A)
	Dimensions	400mm
	Material	EPDM+Rayon mesh
Socket Compatibility	Intel Socket	LGA115X/LGA1366/LGA1200/LGA1700/LGA1851
	AMD Socket	AM5/AM4/AM3+/AM3/AM2+/AM2/FM2+/FM2/FM1



Model Name		Pyramid 360
Model No.		LCAZ-360Y-ARGB
Fan	Dimensions	120 x 120 x 25mm
	Speed	500±100~2000±10% RPM
	Bearing Type	Hydro Bearing
	Rating voltage(Fan)	DC 12.0V
	Rating current(Fan)	0.28A
	Power consumption(Fan)	3.36W
	Rating voltage(Lights)	DC 5.0V
	Rating current(Lights)	0.36A(Max)
	Power consumption(Lights)	1.8W
	Airflow	57.5CFM
	Air Pressure	1.8mmH2O
	Noise	34 dB (A)
	Lifespan	20000 hours at 25°C
	ARGB Connector	SM2.54-3Pin(Female) to SM2.54-3Pin(Male)
Power Connector	2510-4Pin(Female) to 2510-4Pin(Male)	
Radiator	Dimensions	404x121x35.0mm
	Material	Aluminium alloy
Water Block	Dimensions	70.0x85.0x78.5mm
	ARGB Connector	5V ADD-HEADER(Female) to ADD-HEADER(Male)
	Rating voltage(Lights)	DC 5.0V
	Rating current(Lights)	0.72A(Max)
	Power consumption(Lights)	3.6W

Pump	Pump Type	Radiator built-in pump
	Connector	2510-3Pin
	Bearing type	Zirconia ceramic bearings
	Rating voltage	DC 12.0V
	Rating current	0.38A
	Power consumption	4.56W
	Speed	4000±10% RPM
	Water Pressure	1.5 mH2O
	Flow Rate	96 L/h
	Motor Type	3-Phases brushless DC motor
Tube	Lifespan	50000h
	Noise	< 25dB(A)
	Dimensions	400mm
Socket Compatibility	Material	EPDM+Rayon mesh
	Intel Socket	LGA 115X/LGA 1366/LGA 1200/LGA 1700/LGA 1851
	AMD Socket	AM5/AM4/AM3+/AM3/AM2+/AM2/FM2+/FM2/FM1

ACAZ-20R-I



ACAZ-20R-L

Model Number

ACAZ-20R-I / ACAZ-20R-L

Length

200mm

PCI-E Interface

PCI-E 16X 3.0 VER

Cable Type

Male head paired with 180-degree Female Head (ACAZ-20R-I)

Male head paired with 90-degree Female Head (ACAZ-20R-L)

Weight (N.W / G.W.)

170 g / 410 g

Rated Current

2.4A

Connect Type

5V, 3pin WS2812B Addressable RGB Header (Male & Female)

Working Temp. Range

45°C ~ 50°C

Warranty

2 Years

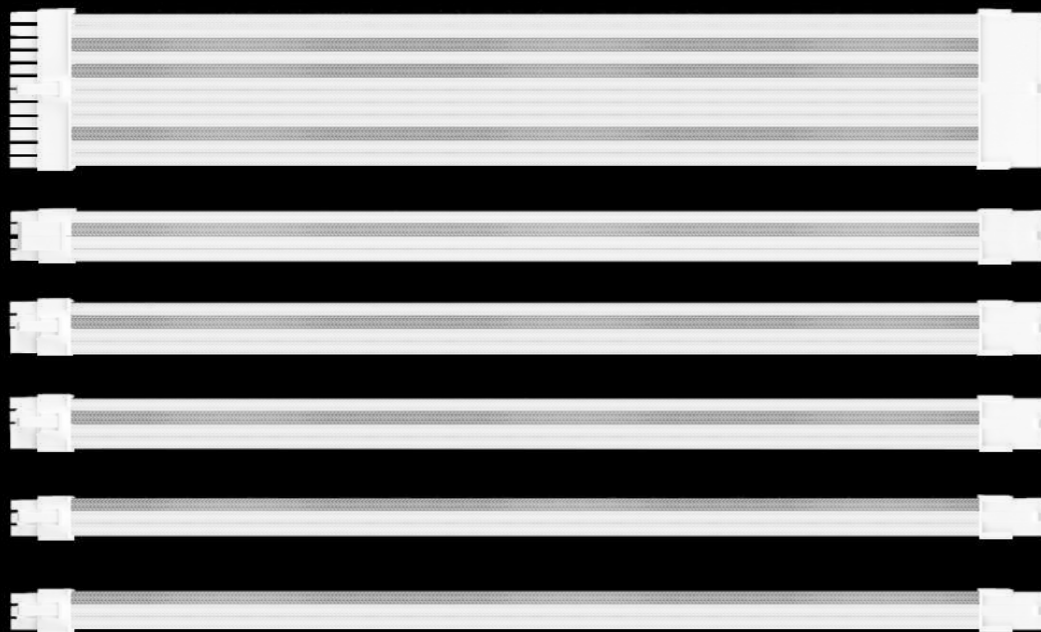
SLEEVED CABLES BLACK-GOLD



SLEEVED CABLES BLACK-GOLD

Model Name	AZZA sleeved extensions (Black/Gold)
Model Number	ACAZ-001
Length	300mm
Wire AWG	16 AWG
Color	Black-Gray-Gold
Comb Color	Black
Package Content	24 Pin ATX Extension Cable x 1
	4+4 Pin EPS Extension Cable x 1
	8 Pin PCI-E Extension Cable x 2
	6 Pin PCI-E Extension Cable x 2
	24 Pin Cable Comb x 4
	8 Pin Cable Comb x 12
	6 Pin Cable Comb x 8

SLEEVED CABLES WHITE-SILVER



SLEEVED CABLES WHITE-SILVER

Model Name	AZZA sleeved extensions (White/Silver)
Model Number	ACAZ-002
Length	300mm
Wire AWG	16 AWG
Color	White-Silver
Comb Color	White
Package Content	24 Pin ATX Extension Cable x 1 4+4 Pin EPS Extension Cable x 1 8 Pin PCI-E Extension Cable x 2 6 Pin PCI-E Extension Cable x 2 24 Pin Cable Comb x 4 8 Pin Cable Comb x 12 6 Pin Cable Comb x 8



Americas

U.S.A

AZZA (USA) Technology Inc.
4115 Schaefer Ave. Chino CA, 91710, U.S.A.
Tel: 909-517-1746
E-mail: service@azzatek.com

PAN AMERICAS

Linkworld Electronic LLC.
4115 Schaefer Ave. Chino CA, 91710, U.S.A.
Tel: 1-714-993-2888
E-mail: guan@linkworld8.com

CANADA

Link Computer Canada Ltd.
2600 John Street, Unit 122, Markham Ontario L3R 3W3 Canada
Toll Free: 1-877-477-3610
Fax: 905-477-4223
E-mail: techsupport@linkcanada.ca, sales@linkcanada.ca

Europe

GERMANY

Linkworld Computer GmbH
Otto-Schott-Str. 4, 41542 Dormagen, Germany
Tel: +49-2133-97906-0
Fax: +49-2133-97906-89

E-mail: info@linkworldcomputer.de
service@linkworldcomputer.de
Facebook: LinkworldComputer

Asia

TAIWAN

Linkworld Electronic Co., Ltd.
9FL., No.13, Lane 35, Jihu Rd., Neihu Dist., Taipei, Taiwan
Tel: 886-2-87515789
Fax: 886-2-87515788 886-2-87515768
E-mail: service@azzatek.com

SINGAPORE

Linkworld Technology (S) Pte Ltd.
Blk 2024, #02-48 Bukit Batok Street 23 Singapore 659529
Tel: 65-9688-3281
Fax: 65- 67224141
E-mail: support@linkworld.com.sg

THAILAND

Linkworld Electronic (Thailand) Co., Ltd.
700/60 Moo 1 Amata Nakorn Industrial Bangna-Trad KM 57 Tambol
Bankao Amphur Phanthong Chonburi 20160 Thailand
Tel: 66-38-214078
E-mail: support@linkworld.co.th
